



Servicing the maritime
industry since 1978

CATALOGUE

2023 Edition

- ▶ Safety
- ▶ Electrical
- ▶ Control
- ▶ Navigation
- ▶ Communications
- ▶ Plumbing
- ▶ Mooring
- ▶ Maintenance

A white silhouette map of Australia is positioned at the bottom of the page. Two specific locations are highlighted with blue circular markers. The marker on the northern coast is labeled 'Darwin' in a white box. The marker on the northeastern coast is labeled 'Cairns' in a white box. The map is partially framed by red and white wavy decorative borders at the top and bottom.

Darwin

Cairns



About Nautical Supplies

Nautical Supplies (AMI Maritime Pty Ltd Trading as Nautical Supplies) is a long established specialist supplier for Northern Australia's commercial, industrial and private marine sectors. Our premises are located on the waterfront close to Darwin's CBD, and Portsmith Cairns, QLD.

We provide a broad range of goods and services, including marine safety equipment and electro-mechanical servicing, and have accumulated a wealth of knowledge and skills in supplying and servicing of this equipment.

In addition, at our Darwin location we have a sail loft and a rigging and splicing department.

We source leading international marine brands, and have freight services in place which enable us to provide fast and efficient deliveries across the whole of Australia and South East Asia.

Nautical Supplies are a member of the AMI Group.

Marine Safety




We have a special interest in the supply and service of marine safety equipment including life rafts, inflatable life jackets, flotation and buoyancy devices, water activated lights, EPIRBs, flares, etc. This interest is fully supported by qualified staff and accredited premises.

Marine Electronics

Nautical Supplies supply, service and install a range of marine electronics for leisure, commercial and defence application including; radio systems, satcom, navigation equipment, IMCOS, and gas and fire detection systems.

Sailing and Specialty Services

In addition to our liferaft service facility we have a sail loft and workshop where we design, make and repair sails and related items. Our rigging workshop provides swaging and splicing services.

Follow us for new products and latest news   

Contact us:

Nautical Supplies Darwin

80 Frances Bay Drive, Darwin, NT, 0800

Ph: 08 8981 6651

Email: sales@nauticalsupplies.com.au

Nautical Supplies Cairns

16 Liberty Street, Portsmith, QLD, 4870

Ph: 07 4050 0090

Email: CairnsSales@nauticalsupplies.com.au



Nautical Supplies Darwin, NT



Nautical Supplies Cairns, QLD



Darwin Showroom



Cairns Showroom

TABLE OF CONTENTS



Don't see what you need?

Huge range available instore and online,
contact us to discuss your requirements

SAFETY

Flares and Distress Signals	4
Life Jackets	5
EPIRBS, PLB & SART	6-8
Life Rafts	9
Rescue Boats and Tenders	10

ELECTRICAL

Navigation Lights	11-12
-------------------	-------

COMMAND & CONTROL

Control Cables	13
----------------	----

NAVIGATION

Electronic Charts	14
Navigation Tools	15

MARINE ELECTRONICS

Marine Radar	16-17
Echo Sounders & Fish Finders	18
Commercial Autopilots	18
Voice and Data	19

COMMUNICATIONS

Radio	20
Antennas	21-22

PLUMBING

Pumps	23-24
-------	-------

MOORING

Buoys and Fenders	25
Rope	26
Chain and Swivels	27
Anchors	28

MAINTENANCE

Fuel Maintenance	29
Sealants and Adhesives	30
Cosmetic Maintenance	31



DREW MARINE



Flares and Distress Signals

For emergencies at sea, flares are vital equipment to have on board to ensure visibility day or night.

Visit the marine safety authority for your state for more information mandatory requirements.

NS CODE	DESCRIPTION
A11000	FLARE KIT COASTAL PACK (20+2R)
A11010	PARACHUTE ROCKET FLARE RED MK8
A11020	HANDFLARE RED PINPOINT MK8
A11050	HANDSMOKE FLARE ORANGE
A11090	LIFESMOKE BUOYANT ORANGE 3 MIN
A11100	MOB P/WESSEX MK9 LIGHT+SMOKE MARKER
A11120	SPEEDLINE LTA PAINS WESSEX 50200
A11125	ROCKET 50080 TO SUIT SPEEDLINE
A11165	FLARE CONTAINER POLY SMALL
A11101	LIGHT REPLACEMENT FOR MOB MK9



MOB DEVICES

Man overboard

SOLAS approved life rings with reflective tape.

NS CODE	DESCRIPTION
A10500	LIFEBUOY SOLAS 75CM 4KG
A10503	LIFEBUOY SOLAS 75CM 2.5KG
A10510	LINE THROWER FOR LIFEBUOY 30/M 250KG
W10301	RESCUE LINE AND QUOIT
A10482	REELSLING SOS FLOATATION MOB DEVICE



PLASTIMO

NS CODE	DESCRIPTION
A10480	DANBUOY MOB MARKER SELF INFLATING

MOB pole for crew-overboard visibility, provides 150 N buoyancy.



LIFECELL



Marine Floatation Devices

NS CODE	DESCRIPTION
A10515	LIFE CELL TRAILER BOAT 2-4 PERSON
A10516	LIFE CELL CREWMAN COMMERCIAL

Trailerboat is the smallest Life Cell that is designed to fit on smaller boats and can be used in inland or offshore waters. The largest of all Life Cells the Crewman is primarily designed for commercial use.

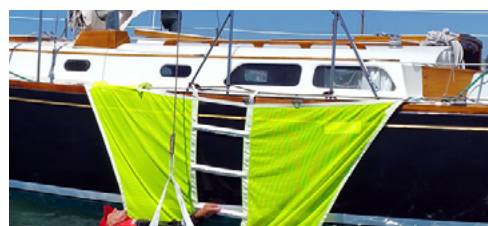


LADDERS



Recovery Devices

NS CODE	DESCRIPTION
N19008	PILOT LADDER 2.5M
N19003	PILOT LADDER 6M
N19005	PILOT LADDER 10M
A10485	RECOVERY LADDER SOS MARINE



MSEA

Inflatable Life Jackets

Available in manual or automatic, and in various sizes, contact Nautical Supplies to discuss your life jacket requirements. Various options available for offshore racing, coastal boating, or commercial SOLAS requirements.

NS CODE	DESCRIPTION
A10025	LIFEJACKET INFLATABLE MSEA 150N MANUAL
A10026	LIFEJACKET INFLATABLE MSEA 150N AUTO
A10040	LIFEJACKET INFLATABLE MSEA CLASSIC CREWMAN 150N MANUAL
A10041	LIFEJACKET INFLATABLE MSEA CLASSIC CREWMAN 150N AUTO
A10030	LIFEJACKET INFLATABLE WORKVEST HAMMAR AUTO
A10010	LIFEJACKET SOLAS 275N AUTO

NS CODE	DESCRIPTION
A10140	LIFEJACKET SOLAS APPROVED
A10150	LIFEJACKET COASTAL ISO 12402-3 150N



Inflatable Wipe Clean Workvest



MSEA Classic Crewman Auto/Manual



MSEA 150N Auto/Manual

**DANIAMANT**

Daniamant
Be safe at sea

Life Buoy Lights

Increase visibility during man overboard situations

NS CODE	DESCRIPTION
A10530	LIGHT LIFEBOUY DANIAMANT L160
A10524	LIGHT LIFEBOUY DANIAMANT L170C
A10540	LIGHT LIFEBOUY DANIAMANT L90
A10550	BRACKET TO SUIT L90 LIGHT

**EVAL**

Since 1976
EVAL
LIFESAVING // MARINE EQUIPMENT

Life Jacket Lights

The new lifejacket light introduced by EVAL, is equipped with alkaline batteries of 5-year lifetime and guarantees continuous operation for more than 8 hours.

NS CODE	DESCRIPTION
A10410	LIGHT LIFEJACKET SOLAS APPROVED



SOS MARINE RANGE AVAILABLE

**S.O.S
MARINE**

EPIRBS

Should the unexpected happen, this EPIRB will relay your location to a vast network of search and rescue satellites, allowing local first responders to get you home more easily. Ensure your DCV meets float free EPIRB legislative compliance as of January 2021..

ACR ARTEX



ACR EPIRBS

Designed with high-efficiency electronics that are built for performance, the GlobalFix™ V4 GP Emergency Position-Indicating Radio Beacon or EPIRB provides the protection you can trust in an emergency

NS CODE	DESCRIPTION
A10722	EPIRB FLOAT FREE ACR GLOBAL FIX V4CAT1
A10773	EPIRB ACR 406 GLOBALFIX PRO CAT 2



Available with and without float free automatic release bracket



GME



GME EPIRBS

The MT600G features a 66 channel GPS receiver with top mounted Quad helix antenna, which means locating the beacon is faster and more accurate.

NS CODE	DESCRIPTION
A10720	EPIRB FLOAT FREE GME MT603FGAUS CAT 1
A10774	EPIRB GME MT600G (manual) GPS 10YR BATTERY



(Left) Float free model, Designed, engineered and manufactured in Australia



OCEAN SIGNAL



Ocean Signal EPIRBS

This Electronic Position Indicating Radio Beacon (EPIRB) will help make sure you're located and rescued if things go wrong.

NS CODE	DESCRIPTION
A10791	EPIRB FLOAT FREE OCEAN SIGNAL CAT1 PRO
A10790	EPIRB 406 RESCUER 66CH GPS 10YR BATTERY



For emergency situations where a user is not physically able to reach the EPIRB in time, The EPIRB1 Pro also comes complete with a Category I Automatic Release Housing.

(left) Float free Model

JOTRON



Jotron EPIRBS

Jotron's high quality products conform to current international regulations according to IMO and SOLAS and meet any mandatory demands of the commercial, marine, fishing, offshore and leisure vessels.

NS CODE	DESCRIPTION
A10730	EPIRB FLOAT FREE JOTRON 60S GPS
Z65504	EPIRB JOTRON GPS MANUAL 60S



Manual



Float free

Tron 60S with float-free bracket has a small and compact handheld size. Tron 60S is totally sealed, has 5 years warranty and is designed to meet IMO SOLAS requirements.

Personal Location Beacons (PLB)

Should the unexpected happen, this EPIRB will relay your location to a vast network of search and rescue satellites, allowing local first responders to get you home more easily. Ensure your DCV meets float free EPIRB legislative compliance as of January 2021..

ACR ARTEX



ACR PLB

Small but resilient, the ResQLink 400 has been professionally engineered and tested to ensure it can withstand even the harshest elements.

NS CODE	DESCRIPTION
A10771	PLB RESQLINK PLB-400 GPS ACR



With three levels of integrated signal technology – GPS positioning, a powerful 406 MHz signal, and 121.5 MHz homing capability – the ResQLink 400 quickly and accurately relays your position to a worldwide network of search and rescue satellites

OCEAN SIGNAL



Ocean Signal PLB

The rescueMe PLB1 can be operated with a single hand in even the most challenging situations. A simple spring loaded flap covers the activation button preventing inadvertent use.

NS CODE	DESCRIPTION
Z65130	PLB RESCUEME OCEAN SIGNAL
A10779	PERSONAL LOCATOR RESCUE ME MOB1 AIS OCEAN SIGNAL



RescueME PLB1 works with the only officially recognised worldwide dedicated search and rescue satellite network (operated by Cospas Sarsat). As this is funded by governments there are NO CHARGES to use this service.

HAMMAR

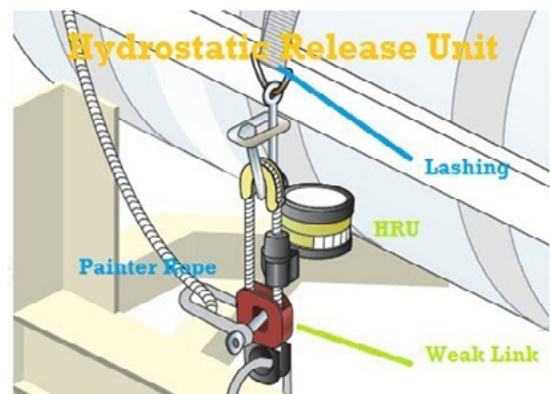
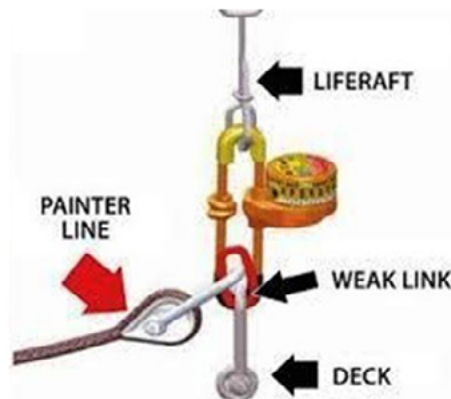


Hydrostatic Release Units

The Hydrostatic Release Unit (HRU) is designed and approved to automatically deploy a life raft or EPIRB in the event of a vessel sinking.

HRUs operate between 1.5 and 4 metres of water depth, to release the securing mechanism for the life raft or EPIRB

NS CODE	DESCRIPTION
A11215	HYDROSTATIC RELEASE HAMMAR H20
Z62728	HYDROSTATIC RELEASE TO SUIT OCEAN SIGNAL CAT1 PRI
A10825	HYDROSTATIC RELEASE TO SUIT ACR GLOBAL FIX V4CAT1
A11222	HYDROSTATIC RELEASE TO SUIT JOTRON 60S FLOAT FREE
Z65585	HYDROSTATIC RELEASE TO SUIT GME MT603FGAUS CAT 1



SART

SART or Search and Rescue Transponder is extremely vital equipment on the ship as it performs the job of a signal-man. It is a vital machine during distress for it helps in locating the position of the vessel in case it goes off-track. SARTs are made of waterproof components which protects them against damage by water.

JOTRON


SART

Tron AIS-SART GMDSS search and rescue transmitter is "Wheel Marked" in accordance with European Council Directive 96/98/EC with latest Commission Directive 2011/75/EU (7th amendment).

NS CODE	DESCRIPTION
A10850	SART TRON 20 W/ BRACKET JOTRON RESCUE ACR 2914


MARCO S.P.A


Hand held Air Horns

Gas horn with snap connection. Complete with monobloc aluminium cylinder. Ecological flammable gas 200 ml

NS CODE	DESCRIPTION
A11675	AIRHORN HAND HELD NON-FLAMMABLE


ACR ARTEX


SART

This SART complies with IMO SOLAS regulations, and has a superior lithium battery that provides over 96 hours of operating life in standby mode, and 12 hours of active operating life

NS CODE	DESCRIPTION
A10830	SART PATHFINDER SEARCH AND RESCUE ACR 2914


RWB MARINE


Hand held Air Horns

Ecoblast is a rechargeable air horn - just pump in new air with a bicycle hand pump, a compressor, or at your local service station.

NS CODE	DESCRIPTION
A11670	AIRHORN ECOBLAST WITH PUMP



Life rafts in Australia are typically classified by how they are used:

Cruising Life rafts

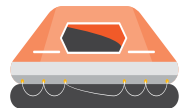
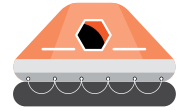
Designed with leisure marine in mind, for boating and fishing in calm waters close to shore, these rafts are intended to be deployed for less than 24 hours – until help arrives.

Coastal/Offshore Life rafts

Intended for use further from the coast, and typically feature a protective canopy and dual buoyancy tubes for greater performance in rough seas.

SOLAS Approved Life rafts

Toughened for commercial vessels and defence application, and feature a large inventory of survival equipment and rations in event of extended exposure while awaiting rescue.


FUJIKURA


SOLAS Approved Commercial Life Raft

Using their state-of-the-art technologies cultivated by long experience in commercial maritime, Fujikura is engaged in production of inflatable life rafts, evacuation chutes, life jackets and lifeboats. Available in various packing options.

NS CODE	DESCRIPTION
W40006	LIFE RAFT SOLAS 6P FUJIKURA
W40010	LIFE RAFT SOLAS 10P FUJIKURA
W40015	LIFE RAFT SOLAS 15P FUJIKURA
W40020	LIFE RAFT SOLAS 20P FUJIKURA
W40125	LIFE RAFT SOLAS 25P FUJIKURA


PLASTIMO


Plastimo Transocean

Designed for navigation in extreme conditions the Transocean includes a large capacity and quantity of ballast pockets, large area drogue anchors, -15°C inflation temperature (group A), double insulating floor, bright orange canopy with automatically erecting arch tube, 4.3 cd. outside light and retro reflecting stripes.

The Transocean ISO 9650-1 also features a ballasted reversible ladder and grab handle to ease embarking.

NS CODE	DESCRIPTION
W20160	LIFE RAFT NSCV 4P
W20170	LIFE RAFT NSCV 6P
W20180	LIFE RAFT NSCV 8P
W20190	LIFE RAFT NSCV 10P
W20192	LIFE RAFT NSCV 12P

ISO
9650-1

 6-man
ISO 9650-1
Transocean.

 PLASTIMO EXCLUSIVITY :
the double chamber

SWIFT TENDERS



Tenders 2.4m - 3.1m

Swift Tenders have a solid and sophisticated feel with their aluminium hull, wide beam and large diameter tubes. Stylish yet practical, they are light, stable, fun to use and are purpose built to travel safely from ship to shore fully loaded.

The standard hull is produced from the finest powder coated marine grade aluminium and has a flat floor with welded-in cast lifting & towing lugs. The tube fabric is coated with "ORCA" Hypalon, a synthetic rubber which is resistant to everything from sunlight and abrasion to petrol and even acetone solvent.



Length	Beam	Tube	Chambers	HP	Persons	Load	Weight
LOA	Overall	Diam.	No.	Max	Max	Kgs	Kgs
2.4	1.44	360	3	5	3	340	37
2.6	1.55	400	3	8	4	430	42
2.9	1.55	400	3	10	5	500	45
3.1	1.55	400	3	15	6	550	49

NARWHAL SOLAS RESCUE VESSELS



Tenders 2.4m - 3.1m

As their main mission, these vessels have been designed for the recovery of crew members who fall into the sea, based on their ease of maneuvering and their rapid set-up. It is equally useful for an eventual abandonment or displacement of the ship and is also used to group, tow and organize life rafts.

The unsinkable rescue vessels NARWHAL SV-420 and SV-480 comply with S.O.L.A.S. regulations, as well as Directive 96/98 / EC, as amended by Directive 2002/75 / EC, on marine equipment (MED), with the CERTIFICATE OF APPROVAL MED-B-000004W for SV-420 and MED-B-000004X for SV-480.

Specifications

	SV-420	SV-480
Total Length	420 cm	480 cm
Inner Length	306 cm	354 cm
Total Blanket	207 cm	210 cm
Inner Sleeve	123 cm	110 cm
Maximum depth	100 cm	100 cm
Maximum Diameter	50 cm	51 cm
Number of compartments	5+1	5+1
Authorised Motorisation	25 HP or 40 HP	40/50/60 or 75 HP
Motor Shaft Type	L	L
Maximum number of people	6	6
Thread weight	200 Kg.	250 Kg.
Maximum Authorised Load	716 Kg.	718 Kg.



HELLA MARINE

Hella marine
Vision and Innovation

Navigation lights

Through ongoing R&D, innovative design and use of high quality materials Hella marine continues to set benchmarks for extremely reliable and highly efficient products. Globally recognised and trusted brand with LED navigation and high performance lighting systems available in over 60 countries through the global HELLA network and specialist marine distributors

NS CODE	DESCRIPTION
A45010	LIGHT LED NAV PORT HELLA
A45020	LIGHT LED NAV STBD HELLA
A45028	LIGHT LED TOWING HELLA NAVI
A45030	LIGHT LED NAV STERN HELLA
A45040	MASTHEAD PRO 3NM
A45041	MASTHEAD PRO 5NM
A45044	LIGHT LED NAV 360 RED HELLA
A45043	LIGHT LED NAV 360 GREEN HELLA
A45045	LIGHT LED NAV 360 WHITE HELLA



Port and Starboard
Nav Lights LED



Pro Masthead
light 3NM



Pro Masthead
light 5NM



360° Green 2NM



360° Red 2NM



360° White 2NM



Navi Towing Light

SEALITE**Navigation lights**

Sealite's range of solar LED marine lanterns offer superior visibility, require minimal maintenance and have a service life of up to 12 years. The marine lanterns range from 1NM up to 13NM and can be used for a range of applications.

NS CODE	DESCRIPTION
A460XX	LIGHT SEALITE SL15 (Y, R, G, W)
A461XX	LIGHT SEALITE SL60 (Y, R, G, W)
A46700	BARGESAFE SEALITE SOLAR PORT 3NM
A46710	BARGESAFE SEALITE SOLAR STBD 3NM
A46715	BARGESAFE SEALITE SOLAR WHITE 3NM
A46720	BARGESAFE SEALITE SOLAR STERN 3NM



Sealite BargeSafe
3NM Solar



Sealite SL15



Sealite SL60

DEN HAAN

Navigation lights for commercial vessels

Den Haan lights are durable, high quality equipment made for harsh commercial marine conditions. Made in Rotterdam, Holland, Den Haan lights are available in a range of models including duplex style lights for additional power.

55N Series

NS CODE	DESCRIPTION
A40119	LIGHT NAV DHR 55N PORT <50M
A40117	LIGHT NAV DHR 55N STBD <50M
A40121	LIGHT NAV DHR 55N MASTHEAD <50M
A40125	LIGHT NAV DHR 55N STERN <50M
A40153	LIGHT NAV DHR 55N ALL ROUND RED <50M
A40155	LIGHT NAV DHR 55N ALL ROUND GREEN <50M
A40149	LIGHT NAV DHR 55N ALL ROUND WHITE <50M

Suited to Sea-going vessels with a length less than 50m. Inland navigation vessels above 20 meters. Matt black polycarbonate, reinforced with fibreglass. Corrosion free, seawater resistant and non-magnetic. Polycarbonate Fresnel lens, shock resistant and interchangeable. PG13 Cable gland from below or side. Conversion kit for hoisting or side bracket mounting available. Approval MED 2014/90/EU.



70N Series

NS CODE	DESCRIPTION
A40213	LIGHT NAV DHR 70N ALL ROUND RED 3NM
A40229	LIGHT NAV DHR 70N ALL ROUND GREEN 3NM
A40223	LIGHT NAV DHR 70N ALL ROUND WHITE 3NM
A40224	LIGHT NAV DHR 70N STERN 3NM

Suited to Sea-going vessels over 50m in length. Matt black polyamide and polycarbonate, reinforced with fibreglass. Corrosion free, seawater resistant and non-magnetic. Polycarbonate Fresnel lens, shock resistant and interchangeable. 1.5 meter neoprene cable H07 RN-F 2x1,5 PG13 Cable gland. Conversion kit for hoisting available. Approval MED 2014/90/EU



Duplex Lights

NS CODE	DESCRIPTION
A40235	LIGHT NAV DHR70N DUPLEX PORT
A40233	LIGHT NAV DHR70N DUPLEX STBD
A40237	LIGHT NAV DHR70N DUPLEX MASTHEAD 6NM
A40241	LIGHT NAV DHR70N DUPLEX ALL ROUND RED 3NM
A40240	LIGHT NAV DHR70N DUPLEX ALL ROUND GREEN 3NM
A40238	LIGHT NAV DHR70N DUPLEX ALL ROUND WHITE 3NM
A40239	LIGHT NAV DHR70N DUPLEX STERN 3NM

Suited to Sea-going vessels over 20m in length. Matt black polyamide and polycarbonate, reinforced with fibreglass. Corrosion free, seawater resistant and non-magnetic. Polycarbonate Fresnel lens, shock resistant and interchangeable. 1.5 meter neoprene cable H07 RN-F 2x1,5 PG13 Cable gland. Approval MED 2014/90/EU, IP56 rated.



Bulbs

NS CODE	DESCRIPTION
A62110	BULB NAV 12V 25W BAY 15D
A62130	BULB NAV 24V 25W BAY 15D
A62150	BULB NAV 24V 40W P28S

Spare parts, bulbs and accessories available

GLENDINNING



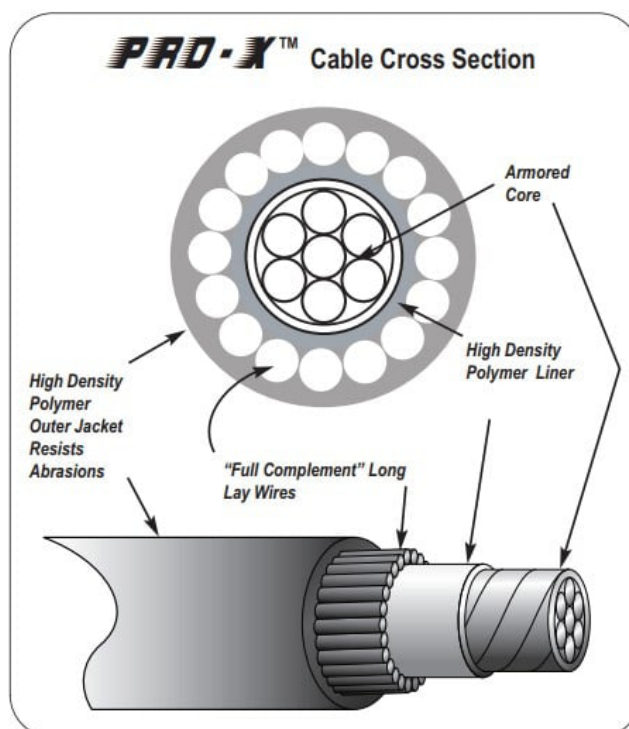
Flexible, durable control cables

Glendinning's Pro-X™ control cables offer you a comprehensive line of high quality pull only, push pull, and specialty control cables.

Pro-X™ control cables give you the quality and reliability you've been looking for!

Glendinning believe in the best possible quality. From the conduit to end fittings, Pro-X™ control cables are manufactured consistently and professionally in Glendinning's facility.

NS CODE	DESCRIPTION
N16300	CONTROL CABLE 33C PRO-X 1.00M
N16304	CONTROL CABLE 33C PRO-X 1.50M
N16310	CONTROL CABLE 33C PRO-X 2.25M
N16312	CONTROL CABLE 33C PRO-X 2.50M
N16314	CONTROL CABLE 33C PRO-X 2.75M
N16316	CONTROL CABLE 33C PRO-X 3.00M
N16320	CONTROL CABLE 33C PRO-X 3.50M
N16323	CONTROL CABLE 33C PRO-X 3.75M
N16324	CONTROL CABLE 33C PRO-X 4.00M
N16326	CONTROL CABLE 33C PRO-X 4.25M
N16328	CONTROL CABLE 33C PRO-X 4.50M
N16334	CONTROL CABLE 33C PRO-X 5.25M
N16336	CONTROL CABLE 33C PRO-X 5.50M
N16340	CONTROL CABLE 33C PRO-X 6.00M
N16344	CONTROL CABLE 33C PRO-X 6.50M
N16348	CONTROL CABLE 33C PRO-X 7.00M
N16352	CONTROL CABLE 33C PRO-X 7.50M
N16354	CONTROL CABLE 33C PRO-X 7.75M
N16356	CONTROL CABLE 33C PRO-X 8.00M
N16358	CONTROL CABLE 33C PRO-X 8.25M
N16360	CONTROL CABLE 33C PRO-X 8.50M
N16364	CONTROL CABLE 33C PRO-X 9.00M
N16366	CONTROL CABLE 33C PRO-X 9.25M
N16368	CONTROL CABLE 33C PRO-X 9.50M
N16372	CONTROL CABLE 33C PRO-X 10.00M
N16376	CONTROL CABLE 33C PRO-X 10.50M
N16380	CONTROL CABLE 33C PRO-X 11.00M
N16400	CONTROL CABLE 33C PRO-X 13.50M
N16402	CONTROL CABLE 33C PRO-X 13.75M
N16404	CONTROL CABLE 33C PRO-X 14.00M
N16408	CONTROL CABLE 33C PRO-X 14.50M
N16412	CONTROL CABLE 33C PRO-X 15.00M
N16418	CONTROL CABLE 33C PRO-X 16.00M
N16426	CONTROL CABLE 33C PRO-X 17.50M
N16430	CONTROL CABLE 33C PRO-X 18.00M



Cable Applications:

- Throttle
- Choke
- Brake
- Utility
- Fuel Shutoff
- Emergency Steering
- Tension
- Flow Control
- Push Button
- Tachometer Core
- Remote Release

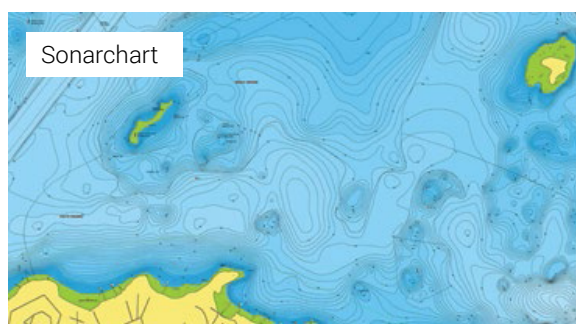


NAVIONICS



Electronic Charts

Whether you're adventuring on the high seas, cruising in home waters, fishing on your new favourite freshwater lake or piloting a commercial workboat, your chartplotter deserves the best, most up-to-date cartography and navigation data available. Since Navionics and Garmin came together, we have been combining the best of our data and technology to produce superior cartography products for boaters all over the world.



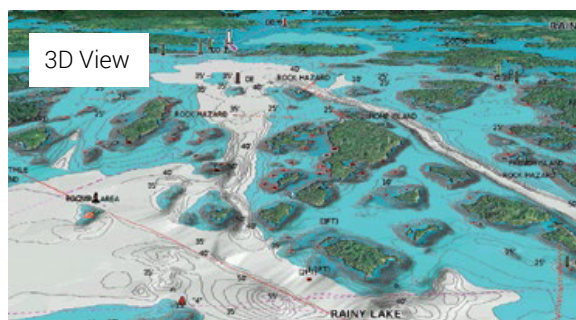
Sonarchart



Community Edits



Dock to Dock route guidance



3D View

NS CODE	DESCRIPTION
A21002	Platinum (Large) NPPC012L Australia and New Zealand
A22002	Platinum (Regular) NPPC026R Australia, West
A22004	Platinum (Regular) NPPC027R, Australia, North East
A22006	Platinum (Regular) NPPC028R, Australia, South East
A22008	Platinum (Regular) NPPC029R, New Zealand
A21001	Navionics+ (Large) NAPC012L Australia and New Zealand
A21003	Navionics+ (Large) NAPC014L, Pacific Islands
A21004	Navionics+ (Large) NAAE010L, Indian Ocean and South China Sea
A21005	Navionics+ (Large) NAAE011L, China Sea and Japan
A22001	Navionics+ (Regular) NAPC026R Australia, West
A2003	Navionics+ (Regular) NAPC027R, Australia, North East
A22005	Navionics+ (Regular) NAPC028R, Australia, South East
A22007	Navionics+ (Regular) NAPC029R, New Zealand

FEATURES BY NAVIONICS CHART TYPE

Feature	Navionics+	Platinum+
Coastal Content	✓	✓
Inland Content lakes	42,000 lakes	42,000 lakes
Detailed Nautical Charts	✓	✓
Sonarchart™ HD Bathymetry	✓	✓
Daily Updates	✓	✓
Dock to Dock Autorouting	✓	✓
Plotter Sync	✓	✓
Community Edits	✓	✓
Advanced Map Options	✓	✓
Sonarchart™ Live Mapping	✓	✓
Relief Shading		✓
Satellite Imagery with Sonarchart™ shading overlay		✓
Aerial Photography		✓
3D View		✓
Panoramic Photos		✓

BOAT BOOKS AUSTRALIA



General Navigation Tools

Navigational equipment to suit paper charts and maps.

NS CODE	DESCRIPTION
C29030	COMPASS PENCIL
C28410	DIVIDERS SINGLE HAND 7INCH
C28420	DIVIDERS SINGLE HAND 8INCH
C28340	RULER PARALLEL CAPT FIELDS 400MM
C28350	RULER PARALLEL CAPT FIELDS 500MM
C28360	RULER PARALLEL CAPT FIELDS 600MM



400mm
Parallel ruler



Single divider 7"



Single divider 8"



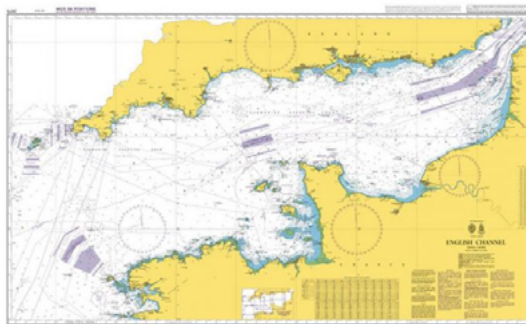
Compass

REFERENCE BOOKS AND PAPER CHARTS



Need a particular book or paper chart? Our showroom locations stock a wide variety of reference materials.

- Australian Charts
- British Admiralty IACA
- New Zealand Navy Charts
- IMO, ITU, Witherby and SOLAS regulated publications
- BridgeWatch Folio Management system



SIMRAD

SIMRAD

Marine Radar Systems

Professional, feature packed navigation equipment. State-of-the-art award winning radar technology, offering reduced weight and compact dimensions, thereby providing the best solution for installation even on small high speed craft.



Multi Function Displays

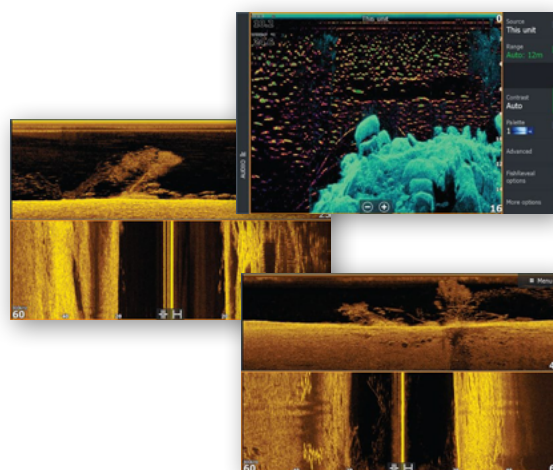
Simrad multifunction displays combine powerful fish-finding sonar technology with the chartplotter navigation features you need to plan trips and find your way on the water. SIMRAD fishfinders offer dedicated sonar displays, perfect for amateur anglers and offshore sportfishing pros.



Advanced Sonar Imaging - Transducers

Complete your ultimate fish-finding system, by getting an entirely new view under the water with SIMRAD's range of imaging transducers. With higher resolution transducers see near picture like views under the water. Don't think it is a fish, know it.

See structure and cover with a new level of refined detail and at a range unmatched by any other structure imaging technology with Active Imaging™ sonar.

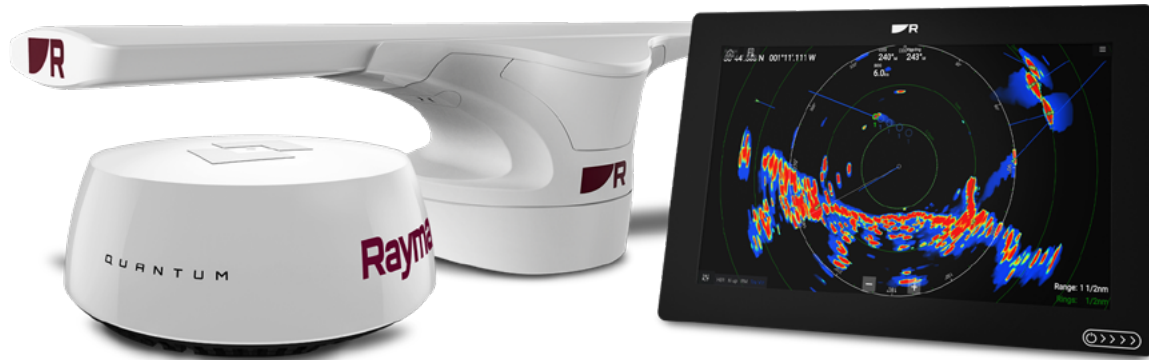


RAYMARINE**Raymarine**

Marine Radar Systems

Raymarine offers a wide range of marine radar systems for all types and sizes of boats.

Day and night, radar systems from Raymarine keep you aware of surrounding traffic, hazards and obstacles, approaching weather and so much more. Use your boat's radar to navigate in dense fog or rain, or confirm your boat's position with super-accurate radar ranges.



Let MARPA and other innovative detection technologies help you navigate safely through a crowded harbor and enjoy map-like coastal detail when cruising offshore. Need a radar for fishing? Find sea birds at long range with Raymarine's state of the art detection algorithms to lead you to the fish.

Clearpulse chirp fishfinders and sonar modules

Whether your passion is freshwater, inshore or offshore coastal fishing, our DownVision™, SideVision™ and new RealVision™ 3D fishfinder sonar modules allow you to image structure and find fish simultaneously - all with exceptional clarity.

With fish finders engineered for hobbyists and serious anglers alike, our range of sonar modules let you spend more time catching fish and less time looking for them.



Autopilots

Raymarine autopilots feature vibrant colour displays and are powered by Raymarine's intuitive LightHouse user interface.

Raymarine has a broad range of drive units to match almost any type of steering system.

No fuss, easy to install and robust - the Evolution autopilot control combines Raymarine's autopilot expertise, FLIR Systems' R&D, and advanced aerospace guidance technology to create Evolution Ai control algorithms that deliver a new level of accurate autopilot control.

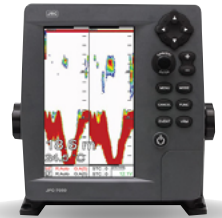


JRC

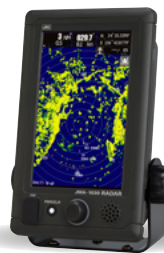
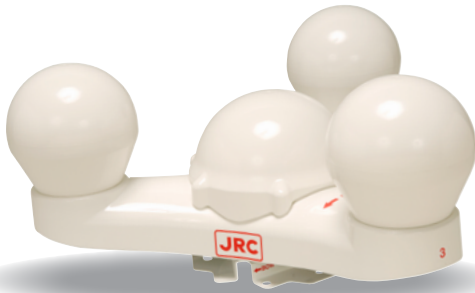


Echo Sounders & Fish Finders

High accuracy and fast data processing, ideal for commercial fleets. Various models available.



Professional radar systems featuring accurate, superior target clarity.



NKE-2044

TMQ



Commercial Autopilots

Designed and manufactured in Australia for professional mariners, established in Brisbane 1976.



(From top left) AP47C colour autopilot, AP9 designed for high speed vessels and ships, AP4 TMQ's commercial workhorse for professional vessels.

C-PLOT

CPLLOT is a flexible software solution designed for professional and recreational mariners. The CPLLOT overlay displays navigational data, historical track, user data such as marks and routes, as well as vessel data such as range and bearing.



COBHAM**COBHAM****Sailor Fleet One**

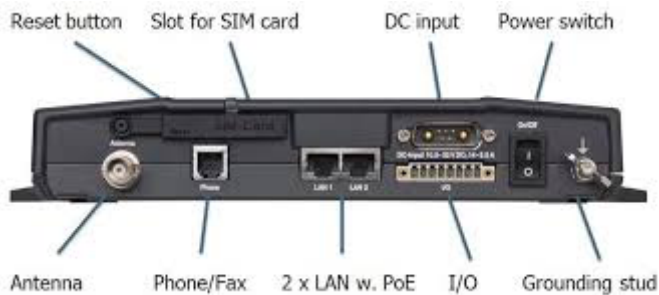
Attractively priced reliable internet and global voice calling via SAILOR's compact antenna.

Ideal for smaller vessels

- Compact 30cm antenna
- Easy installation
- Data connectivity up to 100kbps and voice calling on a single line.
- Reliable Cobham network

Easy to install

You don't need any specialist skills to install or run Fleet One. Simply plug in, set sail and get online, with easy-to-install and set up hardware.

**Lars Thrane LT-3100 Satellite Communications System**

Designed and built for the demanding and rough environment at sea.

- Voice, SMS, Data, and Vessel tracking
- 2.4 kbps and 9.6 kbps compressed data
- Programmable softkeys for e.g. Emergency Service
- Single antenna cable solution (up to 500 m)
- High-performance GNSS/GPS receiver
- High quality microphone, speaker, and equalizer for improved audio performance
- Bluetooth interface supporting voice, SMS, and data
- Voice prompt audio feedback
- Large 4.3" TFT display supporting day and night modes
- Firewall and user authentication for high level of security
- Webserver for configuration and maintenance
- Support external LAN Wi-Fi Access Points
- Support external SIP PABX and SIP handsets
- Connectivity of Smartphones, Softphones, and Apps

**LARS
Thrane****iridium
connected**

ICOM

ICOM

Maritime Radio

A marine radio is one of the most important safety tools on board any vessel. Icom's range of VHF and HF marine transceivers offer innovations such as buoyancy, submersible construction, tough military design and AIS receive capabilities

Handheld VHF Radio

NS CODE	DESCRIPTION
TG8325	VHF MARINE RADIO ICOM HH M25
TG8324	VHF MARINE RADIO ICOM HH M37E
TG8328	VHF MARINE RADIO ICOM HH M73 EURO



HF Radio

NS CODE	DESCRIPTION
TG8350	RADIO ICOM Marine Transceiver MF/HF M804
TG3000	RADIO JRC MF/HF JSS-2150



JRC

Handheld Microphones

NS CODE	DESCRIPTION
TG8315	HAND MIC HM165 TO SUIT M34D
TG8326	HAND MIC HM213 TO SUIT M25 AND M37
TG8440	HAND MIC HM167 TO SUIT M73



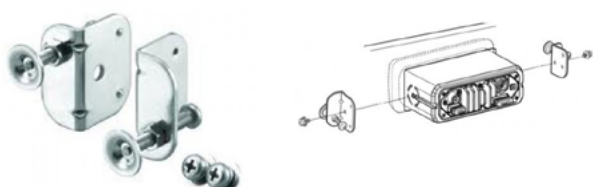
Dash Mount VHF Radio

NS CODE	DESCRIPTION
TG8320	VHF MARINE RADIO ICOM IC-M200
TG8323	VHF MARINE RADIO ICOM IC-M330GE
TG8423	VHF MARINE RADIO ICOM IC-M423G
TG8424	VHF MARINE RADIO ICOM IC-510 E



Mounting Kits

NS CODE	DESCRIPTION
TG8001	FLUSH MOUNTING KIT FOR ICOM RADIO MB69
TG8002	FLUSH MOUNTING KIT FOR ICOM RADIO MB132
TG8003	FLUSH MOUNTING KIT FOR ICOM RADIO MBF5



MARCO S.P.A

MARCO
FLUID TECH

Approved Signalling Horns

Electronic, with loudspeaker, control unit, acoustic membrane with ultrasonic heating system and remote control panel (EW series). Available approvals: RINA, LLOYD'S REGISTER MCA, BUREAU VERITAS, NMMA and BSH according to international regulations COLREG 1972 IMO classes III e IV.

NS CODE	DESCRIPTION
A64000	HORN EM1 MARCO LONG SINGLE SS 12V
A64002	HORN EM1 MARCO LONG SINGLE SS 24V
A64005	HORN TRUMPET EM1/2 SS 24V
A64022	HORN MARCO PW2 12/20M CW COMPRESSOR



GME



Australian made antennas

GME's range of Australian Made marine VHF antennas lead the market in performance and quality. Designed, engineered, and manufactured to ensure reliability and high performance in the harshest marine environments.

Compatible with GME's full range of marine VHF radios, these antennas are the perfect addition to any vessel's communication set up.

Complete VHF Antenna Solutions

1800mm Ground independent VHF antenna.

NS CODE	DESCRIPTION
TG4019	Antenna VHF GME AE346V 1.8M

VHF Whip Antennas

White fibreglass ground independent antennas.

NS CODE	DESCRIPTION
TG4020	Antenna VHF GME AW364V 1.2M
TG4021	Antenna VHF GME AW366V 1.8M
TG4022	Antenna VHF GME AW368V 2.4M



AW364V 1.2M

AE346V

AE346V connection closeup

BANTEN



Commercial Quality Communication

Italian made Bantén communication products are known for their reputation in the design and manufacture of commercial and professional grade antenna utilised by commercial maritime, leisure and defence vessels.

VHF Antennas

Range of Bantén antennas available, speak to your sales representative for full selection.

NS CODE	DESCRIPTION
1280080	20306 RACING AIS VHF 162 MHZ 0.25MTR
1280204	00045 ANT VHF EMERGENCY 25CM ORANGE

TV Antennas

This antenna is ideal for boats or caravans

NS CODE	DESCRIPTION
1282090	TV DIGI Whip 25cm with Sports connection

Marine AIS - 0,25 mt (10") - S/S bracket - helical antenna - 0 dBi gain - PL connector

Antenna Specifically designed for the EMERGENCY Marine VHF 156.8 Mhz channel

Digi Whip Antenna kit includes 5m cable for installation



Racing AIS VHF

Emergency 25cm

TV Digi Whip

GLOMEX**GLOMEX**
The best in marine antennas

Quality marine antennas

Established in 1984, Italian made Glomex antennas offer high quality manufacture and durability. Partnering with premium boat builders such as Azimut Benetti, Bavaria, Beneteau Jeanneau, Dufour yachts, Ferretti Group, Hanse, Sea Ray and Sunseeker... just to name a few.

VHF Antennas

VHF antennas for crisp and dependable radio communication.

NS CODE	DESCRIPTION
TG4013	VHF ANTENNA 3DB 900MM SS FME TERMINATION GLOMEX P/N RA106SLSFME
TG4001	VHF ANTENNA 3DB 1.5M F/GLASS
TG4011	VHF ANTENNA HIGH PERFORMANCE 6DB 2.4M F/GLASS RA1225HP
TG4002	VHF ANTENNA 6DB 2.4M F/GLASS

Sailboat Antennas

35" Classic Stainless Steel VHF Sailboat Antenna with Bracket 3dB – PL-259 Connector, No Coax Cable Included.

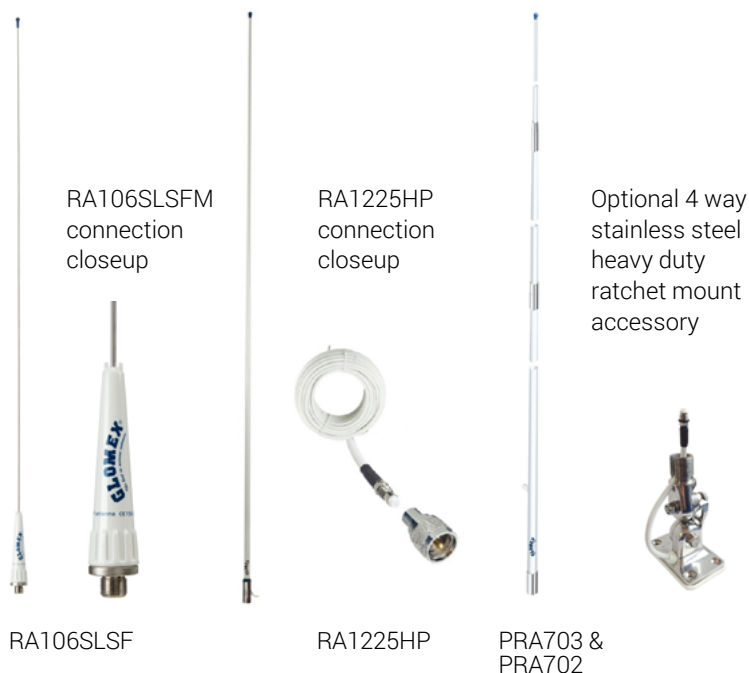
NS CODE	DESCRIPTION
TG4012	VHF ANTENNA 3DB 900MM SS RA109SLS

Deck Mount

NS CODE	DESCRIPTION
TG4009	DECK MOUNT 4WAY RATCHET
TG4003	DECK MOUNT 4 WAY RATCHET SS

HF Antennas

NS CODE	DESCRIPTION
TG4005	HF ANTENNA 800W 7M 3 PIECES @ 2.35, 2.35 AND 2.3M F/GLASS PRA703?
TG4006	HF ANTENNA 500W 4.73M @ 2 PIECES 2.4 AND 2.35m PRA702?



JOHNSON**Impeller Pumps and Spares**

Flexible impeller pumps provide an efficient solution to most marine pumping needs. The primary advantage of them is their self-priming capability, followed by their ability to pump a wide range of liquids and even semi liquids.

NS CODE	DESCRIPTION
C10010	PUMP TRANSFER 3/8 BSP F4B-8
C10015	PUMP TRANSFER 3/8 BSP F5B-8
C10020	PUMP TRANSFER 3/8 BSP F7B-8

**Pump Impellers**

NS CODE	DESCRIPTION
C10285	F4 IMPELLER 09-810B
C10290	F4 IMPELLER 09-810B-9 (NITRILE)
C10230	F5 IMPELLER 09-1027B
C10235	F5 IMPELLER 09-1027B-9 (NITRIL)
C10240	F7 IMPELLER 09-1028B
C10245	F7 IMPELLER 09-1028B-9 (NITRILE)

Johnson Pump®**Bilge Pumps**

Electric submersible bilge pumps. Improved design with easy-to-install Dura-Port discharge ports to eliminate stress cracking caused by over-tightened hose clamps.

NS CODE	DESCRIPTION
M10015	PUMP BILGE JP L550 12V
M10020	PUMP BILGE JP L650 12V
M10025	PUMP BILGE JP L1250 12V
M10030	PUMP BILGE JP L1600 12V
M10040	PUMP BILGE JP L2200 12V
M10045	PUMP BILGE JP L2200 24V
M10050	PUMP BILGE JP L4000 12V
M10055	PUMP BILGE JP L4000 24V

**MARCO S.P.A****MARCO**
FLUID TECH**Bilge Pumps**

NS CODE	DESCRIPTION
A70371	PUMP BILGE MARCO UP500 32LPM 12V
A70372	PUMP BILGE MARCO UP500 32LPM 24V
A70375	PUMP BILGE MARCO UP1000 63LPM 12V
A70379	PUMP BILGE MARCO UP1500 95LPM 12V
A70383	PUMP BILGE MARCO UP1500 95LPM 24V
A70387	PUMP BILGE MARCO UP2000 126LPM 12V
A70391	PUMP BILGE MARCO UP2000 126LPM 24V



Completely submersible bilge pumps. Compact design with ABS material housing, corrosion resistant.

TMC**Pumps & Spares**

NS CODE	DESCRIPTION
M15125	MACERATOR + MOTOR ASSY TMC 12V
M15126	MACERATOR + MOTOR ASSY TMC 24V
M15145	KIT BODY TO SUIT TMC SP619



Self priming 12Volt macerator waste pump, used to empty holding tanks, or transfer waste from holding tank toilets to main holding tank.

RULE



Bilge Pumps and Spare Parts

Fully submersible pumps designed for bilge or bait application. Extremely efficient, draws low current and offers high capacity output in a very compact housing

NS CODE	DESCRIPTION
M20100	PUMP BILGE RULE 360 22LPM 12V
M20112	PUMP BILGE RULE 500 32LPM 12V
M20120	PUMP BILGE RULE 1100 69LPM 12V
M20140	PUMP BILGE RULE 1500 94LPM 12V
M20145	PUMP BILGE RULE 1500 94LPM 24V
M20160	PUMP BILGE RULE 2000 126LPM 12V
M20180	PUMP BILGE RULE 2000 126LPM 24V
M20190	PUMP BILGE RULE 4000 252LPM 12V
M20195	PUMP BILGE RULE 4000 252LPM 24V
M20130	PUMP BILGE AUTO 500 RULE 12V



Float Switches

NS CODE	DESCRIPTION
M10110	SWITCH FLOAT AS888 12/24V
M10120	SWITCH FLOAT ULTIMA 12/24V
M20040	SWITCH FLOAT RULE MODEL 35
M20245	SWITCH FLOAT RULE-A-MATIC PLUS
M10110	FLOAT SWITCH JOHNSON



SHURFLO



Fresh Water Pumps

NS CODE	DESCRIPTION
A70050	PUMP FRESH WATER SHURFLO 12V
A70052	PUMP FRESH WATER SHURFLO 24V



Shurflo pumps are known throughout the world as a leading supplier of quality 12v and 24v water pumps for caravan, boat fresh water and deck wash pumps and camping.

JABSCO



Macerator Pumps & Spares

NS CODE	DESCRIPTION
M15050	MACERATOR PUMP JABSCO 18590-2092 12V
M15390	MACERATOR PUMP JABSCO 18590-2094 24V
C15600	KIT SERVICE TO SUIT JABSCO MAC 18590



DC Macerator Pump - 4 Blade Stainless Steel Chopper

Clutch Pumps & Spares

NS CODE	DESCRIPTION
C15035	PUMP CLUTCH 1INCH BSP PORT 24V 1XB
A70120	PUMP CLUTCH 1.5INCH BSP PORT 24V 1XB
A70150	PUMP CLUTCH 2INCH BSP PORT 24V 1B
C15032	PUMP CLUTCH 1.5INCH FLANGE PORT 24V 1XB
A70152	PUMP CLUTCH 2INCH FLANGE PORT 24V 1B



A range of heavy duty bronze pumps with flexible impellers, electrically operated clutches (12 or 24 volt) and long life mechanical seal.

Self Priming Pumps

NS CODE	DESCRIPTION
A70010	PUMP JABSCO 32LPM 23680-4003 12V
A70000	PUMP JABSCO 32LPM 23680-4103 24V
A70030	PUMP 11LPM PARMAX 3 12V



The Jabco "WATER PUPPY" range of flexible impeller pumps have 12 volt DC motors for many applications including bilge pumping, deck wash, shower drain and many other general purpose applications.

POLYFORM


The original plastic fender

Polyform AS was established in 1955 and was the first company in the world to produce inflatable, all-plastic net buoys and fenders. From the rough North Atlantic waters to the sunny tropics Polyform Norway products are made to withstand the toughest conditions and strains.

A Series Buoy

NS CODE	DESCRIPTION
G20941	A0 280mm x 210mm (L x Dia) Buoy
G20940	A1 380mm x 295mm (L x Dia) Buoy
G20930	A2 500mm x 390mm (L x Dia) Buoy
G20920	A3 575mm x 460mm (L x Dia) Buoy
G20919	A4 710mm x 550mm (L x Dia) Buoy
G20918	A5 940mm x 710mm (L x Dia) Buoy
G20917	A6 1120mm x 850mm (L x Dia) Buoy
G20900	A7 1420mm x 1100mm (L x Dia) Buoy



Available in various colours, high strength A series buoys are designed with reinforced rope holds for maximum durability.



F Series Buoy

NS CODE	DESCRIPTION
	F015 370mm x 130mm (L x Dia) Buoy
G21591	F01M 465mm x 130mm (L x Dia) Buoy
	F01L 560mm x 130mm (L x Dia) Buoy
G21552	F02 660mm x 200mm (L x Dia) Buoy
G21551	F1 610mm x 150mm (L x Dia) Buoy
G21592	F2 610mm x 220mm (L x Dia) Buoy
G21553	F3 745mm x 220 mm (L x Dia) Buoy
G21550	F4 1040mm x 220mm (L x Dia) Buoy
G21555	F5 775mm x 290 mm (L x Dia) Buoy
G21556	F6 1090mm x 290mm (L x Dia) Buoy
G21557	F7 1020mm x 375mm (L x Dia) Buoy
G21558	F8 1440mm x 375mm (L x Dia) Buoy
G21590	F11 1455mm x 590mm (L x Dia) Buoy
	F13 1880mm x 750mm (L x Dia) Buoy



Polyform F-series cylindrical fenders feature high abrasive resistance and high energy absorption (up to 3.8 ton meter for F-13) making them suitable for ships of up to 1500 ton d/w (F-13).



Mooring Buoys

NS CODE	DESCRIPTION
G23450	BUOY MOORING POLYFORM MB-40Y
G23454	BUOY MOORING POLYFORM MB-100Y

Used for mooring, marking of fishing gear and cables, pipelines, and different other surface installations


SEALITE


NS CODE	DESCRIPTION
G20950	BUOY MARKER 700MM DIA SEALITE YELLOW



ATS ROPE AND NETS



Silver Rope

Silver Rope is soft and easy to handle, making it ideal to use as a general purpose rope

NS CODE	DESCRIPTION
N300XX	ROPE SILVER 6-40MM



RWB MARINE



Nylon Ropes

Nylon rope is the strongest and most elastic synthetic fibre UV resistant rope. It is easy to handle, has great elasticity, shock absorption and abrasion resistance.

NS CODE	DESCRIPTION
H20006	ROPE NYLON 6MM
H20008	ROPE NYLON 8MM
H20010	ROPE NYLON 10MM
H20012	ROPE NYLON 12MM
H20014	ROPE NYLON 14MM
H20016	ROPE NYLON 16MM
H20018	ROPE NYLON 18MM



DONAGHY'S



Aquatec Rope

Aquatec Rope is ideally suited to applications of marine fishing and heavy industrial use where reliability is key

NS CODE	DESCRIPTION
N41208	ROPE AQUATEC 8MM 250M
N41210	ROPE AQUATEC 10MM 250M
N41212	ROPE AQUATEC 12MM 250M
N41214	ROPE AQUATEC 14MM 250M
N40219	ROPE AQUATEC 18MM 250M
N40229	ROPE AQUATEC 28MM 250M
N40232	ROPE AQUATEC 32MM 250M



Polypropylene Rope

Polyester abrasion, UV resistance with high strength provide a high performance low cost mooring rope with neutral buoyancy.

NS CODE	DESCRIPTION
N40204	ROPE SEA GREEN POLYPROP 4MM
N40206	ROPE SEA GREEN POLYPROP 6MM
N40207	ROPE SEA GREEN POLYPROP 7MM
N40208	ROPE SEA GREEN POLYPROP 8MM
N40210	ROPE SEA GREEN POLYPROP 10MM
N40213	ROPE SEA GREEN POLYPROP 12MM
N40215	ROPE SEA GREEN POLYPROP 14MM
N40216	ROPE SEA GREEN POLYPROP 16MM
N40218	ROPE SEA GREEN POLYPROP 18MM
N48575	ROPE SEA GREEN POLYPROP 20MM



CHAIN

Galvanised & Stainless Steel Chain

NS CODE	DESCRIPTION
G12006	GALVANISED CHAIN 6MM SHORT LINK
G12008	GALVANISED CHAIN 8MM SHORT LINK
G12010	GALVANISED CHAIN 10MM SHORT LINK
G12013	GALVANISED CHAIN 13MM SHORT LINK
G21306	GALVANISED CHAIN 6MM REG LINK
G21308	GALVANISED CHAIN 8MM REG LINK
G21310	GALVANISED CHAIN 10MM REG LINK
F42302	STAINLESS STEEL CHAIN SS316 2MM
F42303	STAINLESS STEEL CHAIN SS316 3MM
F42304	STAINLESS STEEL CHAIN SS316 4MM
F42306	STAINLESS STEEL CHAIN SS316 6MM
F42308	STAINLESS STEEL CHAIN SS316 8MM



Galvanised short link chain



Stainless Steel regular link chain

STAINLESS STEEL HARDWARE

Stainless Steel Swivels

NS CODE	DESCRIPTION
L13034	SWIVEL ANCHOR 3 WAY 6-8MM
L13040	SWIVEL ANCHOR WITH TWIST 6-8MM
L13042	SWIVEL ANCHOR WITH TWIST 10-12MM

Galvanised Swivels

NS CODE	DESCRIPTION
L13010	SWIVEL HOT DIP GALV 10MM
L13013	SWIVEL HOT DIP GALV 13MM
L13016	SWIVEL HOT DIP GALV 16MM
L13020	SWIVEL HOT DIP GALV 20MM
L13025	SWIVEL HOT DIP GALV 25MM



ANCHOR CONNECTORS

Swivel Anchor Connector

NS CODE	DESCRIPTION
B33320	SWIVEL ANCHOR CONNECTOR KONG 6-8MM
B33322	SWIVEL ANCHOR CONNECTOR KONG 8-12MM
B33324	SWIVEL ANCHOR CONNECTOR KONG 12-13MM

Quick Links

NS CODE	DESCRIPTION
B21060	QUICK LINK SS 316 6MM
B21080	QUICK LINK SS 316 8MM
B21100	QUICK LINK SS 316 10MM

JOINING LINKS

Link chain

NS CODE	DESCRIPTION
L12608	JOINING LINK CHAIN SS 8MM
L12610	JOINING LINK CHAIN SS 10MM
L12612	JOINING LINK CHAIN SS 12MM

ROCNA



Original Rocna Anchors

Of all anchor types, a concave fluke gives the greatest resistance, and through clever design, Rocna provides the largest fluke area possible. In very soft seabeds, this provides the holding power to secure your boat. On hard or weedy sea floors, Rocna's chisel tip ensures that it cuts through and bites deep.

NS CODE	DESCRIPTION
G10604	ANCHOR ROCNA 4KG
G10606	ANCHOR ROCNA 6KG
G10610	ANCHOR ROCNA 10KG
G10615	ANCHOR ROCNA 15KG
G10620	ANCHOR ROCNA 20KG
G10625	ANCHOR ROCNA 25KG
G10633	ANCHOR ROCNA 33KG
G10640	ANCHOR ROCNA 40KG
G10655	ANCHOR ROCNA 55KG
G10670	ANCHOR ROCNA 70KG
G10699	ANCHOR ROCNA 110KG
G1070	ANCHOR ROCNA 150KG



**Wide range of anchors
available, contact us for
information on larger models**

SARCA



Sarca Super Anchors

Super SARCA Anchors are designed and manufactured in Australia, Sarca's build quality assured using the best steels then hot dipped galvanized, the stainless Sarca being of 316 stainless steel. Sizes up to Super Sarca #18 at 220Kg.

NS CODE	DESCRIPTION
G10801	ANCHOR SUPER SARCA #1 4KG
G10802	ANCHOR SUPER SARCA #2 6KG
G10803	ANCHOR SUPER SARCA #3 9KG
G10804	ANCHOR SUPER SARCA #4 13KG
G10806	ANCHOR SUPER SARCA #6 22KG
G10807	ANCHOR SUPER SARCA #7 25KG



Sarca Excel Anchor

The Sarca Excel is a certified Super High Holding Power anchor.

New generation anchor without a roll bar. The Excel will fit just about any anchor housing arrangement—pull pit and bow roller designs, the Excel caters for boats from the smallest run a bout to large ocean going work boats, yachts and trawlers. Sizes up to Sarca Excel #19 at 160Kg.

NS CODE	DESCRIPTION
G10812	ANCHOR EXCEL SARCA #2
G10813	ANCHOR EXCEL SARCA #3
G10814	ANCHOR EXCEL SARCA #4
G10815	ANCHOR EXCEL SARCA #5
G10816	ANCHOR EXCEL SARCA #6



FUEL DOCTOR



Cleaning and Preventative Maintenance for marine fuels

Fuel Doctor is a highly effective product at cleaning and protecting fuel from contamination as a result of airborne soil spores. Spores develop into organisms which feed on petrols and diesel, manifesting into slimy, sticky material that can plug and damage engines.

Fuel Doctor's state of the art formulation cleans gums and converts free water and microbial growths into microscopic particles. These particles are dispersed evenly throughout the fuel and harmlessly processed through combustion to exhaust.

NS CODE	DESCRIPTION
E43700	FUEL DOCTOR 250ML
E43702	FUEL DOCTOR 1.0L
E43704	FUEL DOCTOR 5.0L
E43706	FUEL DOCTOR 25L DRUM
E43708	FUEL DOCTOR 205L
E43710	FUEL DOCTOR 1000L IBC



PROP SPEED

Protection for underwater assets

Keep your running gear and any other underwater metals free of marine growth and protected against corrosion with PropSpeed. Use PropSpeed on propellers, rudders, shafts, struts, trim tabs, IPS drives, thrusters, keel coolers or any underwater metal surface. Two part product with strong etching primer that bonds firmly to metals, followed by an ultra smooth clear coat to prevent adhesion of marine growth.

PropSpeed™ Proclean and Propprep wipes available

NS CODE	DESCRIPTION
R49051	PROPSPEED DIY 200ML SMALL
R49052	PROPSPEED DIY 500ML MEDIUM
R49053	PROPSPEED DIY KIT 1LT LARGE
R49057	PROPSPEED DIY COMMERCIAL
R49058	PROPSPEED ETCHING PRIMER KIT
R49060	PROPSPEED CLEAR COAT 320ML



FIXTECH



Sealants and Adhesives

Fixtech offer a wide range of sealants and adhesives for marine, construction and industrial projects, in tubes and sausages.

NS CODE	DESCRIPTION
E74230	GLAZING SEALANT FS200 BLACK
E74316	SEALANT FIXTECH FIX2 WHITE 125ML
E74320	SEALANT FIXTECH MSP15 MP WHITE 290ML
E74322	SEALANT FIXTECH MSP15 MP BLACK 290ML
E74334	SEALANT MS190 STRUCTURAL WHITE
E74336	SEALANT MS190 STRUCTURAL BLACK
E74351	SEALANT FIXTECH DECK CAULKING 290ML BLACK
E74352	SILICONE FIX 8 BLACK
E74354	SILICONE FIX 8 ALUMINIUM
E74356	SILICONE FIX 8 WHITE
E74358	SILICONE FIX 8 CLEAR

FIX200 FS200 is a high strength, multi-blended unique moisture curing silicone suitable for the fixing and sealing of organic and non-organic window panels, available in black only.

Fixtech Fix 2 is available in a 125ml squeeze tube, and is a high quality single component joint sealant with high adhesive strength.

FIX15 is a high quality single component flexible adhesive joint sealant available in a 290ml cartridge and 600ml sausage.

FIX190 is a single component adhesive sealant offering ultimate high strength in structural bonding and direct glazing bonding and sealing.

FIX1DC is a high quality single component adhesive sealant with a low viscosity, excellent adhesive properties designed for Teak and Synthetic caulking.

FIX8 Silicone is a high quality architectural grade single component silicone sealant, available in white, translucent, aluminium and black.



STARBRITE



Polish and Streak Removal

As well as offering premium Teak Care products, Starbrite offer high quality waterproofing, streak removal and polishing products for marine surfaces.

NS CODE	DESCRIPTION
E43225	BLACK STREAK REMOVER 220Z
E43226	WATERPROOFING 220Z
E43227	VIEW GUARD CLEAR PLASTIC
E43235	LIQUID RUBBING COMP HEAVY
E43240	PREMIUM MARINE POLISH 397GM
E43242	PREMIUM MARINE POLISH 946ML



Teak Care products also available



DURALAC



Jointing Compound

Use in marine/industrial applications wherever two metal surfaces are joined – even where components of the same metal are in contact and where metals contact wood, rubber or synthetic materials.

NS CODE	DESCRIPTION
J30275	DURALAC 115ML

Ideal for between masts and spars, aluminium alloy plates, extrusions and bolts or rivets, for marine application where corrosion is accelerated by brine concentration.



CHEMTECH

Cleaning and surface protection

The Chemtech range of marine & vehicle care and protection products have been developed to meet the demands of extreme climatic and environmental conditions.

Used extensively by boat owners, professional detailing, heavy vehicle trade, car, 4WD & Truck enthusiasts for over 20 years.

From wash and detailing products, degreasers, fuel additives, metal and aluminium cleaning and polishing products, Chemtech has all applications covered.

NS CODE	DESCRIPTION
E43260	CLEANER BILGE AND ENGINE CT14 1L
E43270	CLEANER BILGE AND ENGINE CT14 5L
E43280	DEGREASER CT14 20L
E43200	CLEANSING GEL CT18 1L
E43205	CLEANSING GEL CT18 5L
E43206	CLEANSING GEL CT18 20L
E43101	WASH N WAX CHEMTECH 1L
E43105	WASH N WAX CHEMTECH 5L

**ALTEX**

Anti Foul Products

Altex No.5 Antifouling is recommended where multi-season effective fouling protection is needed, and where regulations ban or restrict the use of organotin compounds.

Vivid® Aluminium safe antifouling is proven high performance protection. Vivid® provides excellent multi-season, dual biocide antifouling under all conditions for all substrates.



NS CODE	DESCRIPTION
R44054	Altex No. 5, 4 Litre Tin N/blue
R45054	Altex No. 5, 4 Litre Tin Aurora Red
R46054	Altex No. 5, 4 Litre Tin Classic Black
R44059	Altex No. 5, 10 Litre Tin N/blue
R45059	Altex No. 5, 10 Litre Tin Aurora Red
R46059	Altex No. 5, 10 Litre Tin Classic Black
R44011	Petit Vivid Blue 500ml Tin
R44014	Petit Vivid Blue 4L Tin
R45011	Petit Vivid Red 500ml Tin
R45014	Petit Vivid Red 4L Tin
R46011	Petit Vivid Antifoul Black 500ml Tin
R46014	Petit Vivid Antifoul Black 4L Tin
R46015	Petit Vivid Antifoul Black 10L Tin

CARBOLINE

Sea Barrier 3000

Sea~Barrier 3000 is a high performance, high copper loading, tin-free, ablative antifouling for a controlled and effective release of biocide during operation over extended service periods

NS CODE	DESCRIPTION
R44134	Sea Barrier 3000 Blue 4 litre - 7.36 kg
R46134	Sea Barrier 3000 Black 4 litre - 7.36 kg
R44139	Sea Barrier 3000 Blue 10 litre - 18.4 kg
R46139	Sea Barrier 3000 Black 10 litre - 18.4 kg



Is your life raft **overdue** for a service?



PLASTIMO **Fujikura**

DUNIRY

S.O.S MARINE

Safety equipment can only protect you and your crew if it is in **working order**.

Depending on brand and pack type, life raft service intervals can be 12, 24 or 36 months. Following the recommended service timetable from your raft's manufacturer ensures your warranty stays valid, and that your raft will function as expected in an emergency.

Book a service at your nearest Nautical branch

Our friendly Service Department can also service Life Jackets and Dan Buoys from many major brands:

marlin

LADE OU

**MARINE
POOL**
SPIRIT OF THE OCEAN

LALIZAS
Simply life saving

PLASTIMO

BURKE

AXIS
PEDES