

QUANTUM RADAR



SAILING

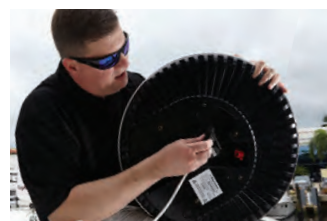
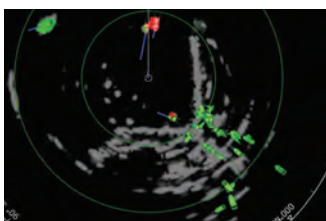
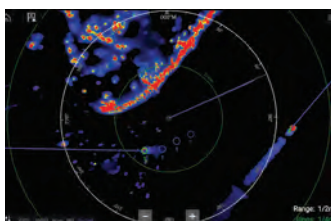


CRUISING



FISHING

Day and night, radar systems from Raymarine keep you aware of surrounding traffic, hazards and obstacles, approaching weather and so much more. Use your radar to navigate in dense fog or rain. Confirm your boat's position with super-accurate radar ranges. Let MARPA help you navigate safely through a crowded harbour. Enjoy map-like coastal detail when cruising offshore. Raymarine offers a wide range of radar solutions for all types and sizes of boats.



Compact Performance

Quantum radars use solid-state CHIRP pulse compression technology to deliver superior target awareness at both long and extremely short ranges. FLIR's exclusive ATX™ advanced target separation technology displays targets like boats, buoys, and landmarks with exceptional resolution and separation quality.

Energy Efficient

Quantum radars solid-state technology consumes very little power, making Quantum especially friendly to vessels running on battery power. Solid-state radar technology also generates very low radiated emissions.

Quantum 2 with Doppler

Quantum 2 with Doppler elevates your awareness by detecting radar frequency shifts returned by moving versus stationary targets. Quantum 2 then colour codes inbound targets red (dangerous) and outbound targets green (safe), making it easy to discern potentially hazardous situations when navigating in high-traffic areas.

Simple Installation

With every Raymarine Quantum system, you'll also benefit from a rugged and lightweight design that is easy to install. Quantum 2 can be installed in a traditionally wired configuration, or use built-in Wi-Fi technology to connect directly to your Raymarine MFD.

NEW

Quantum is now available in black.



www.nauticalsupplies.com.au

Nautical Supplies Darwin:

80 Frances Bay Road, Darwin, NT
 PO Box 37671, Winnellie, NT 0821
T: 08 8981 6651 | **F:** 08 8941 0251
E: Sales@nauticalsupplies.com.au

Nautical Supplies Cairns:

16 Liberty Street,
 Portsmith, QLD, 4870
T: 07 4050 0090
E: CairnsSales@nauticalsupplies.com.au

CYCLONE RADAR



CRUISING / WORKBOAT/
LAW ENFORCEMENT



FISHING

Cyclone Solid-State Open Array Radar

Cyclone radars are the ultimate expression of design, rugged performance, and unmatched situational awareness. Tackle the harshest conditions with the confidence of Cyclone's solid-state CHIRP pulse compression technology and aircraft wing-inspired design. Each model features innovative detection capabilities, including Cyclone Bird Mode, RangeFusion™ technology, and high-speed 60 rpm imaging.

Engineered for Extremes

The aircraft-wing-inspired design delivers a best-in-class 100-knot wind rating and meets the commercial grade IEC 62388 standard for ship borne radar.

Real-Time Target Tracking

Fast 60 RPM rotational speed delivers 360 degrees of awareness and accurate target tracks in real-time.

Safer Navigation with Doppler

Doppler target tracking simplifies the interpretation of dangerous and safe targets for added safety.

Professional grade ARPA

Cyclone automatically tracks up to 50 targets using the same advanced ARPA technology trusted by the United States Coast Guard.

RangeFusion™ Technology

Cyclone combines short and long pulses into a single high clarity radar image, simultaneously delivering exceptional short-range and long-range targets.

Enhanced Cyclone Bird Mode

Cyclone CHIRP pulse compression technology intelligently optimizes gain and tune settings for imaging distant sea birds.

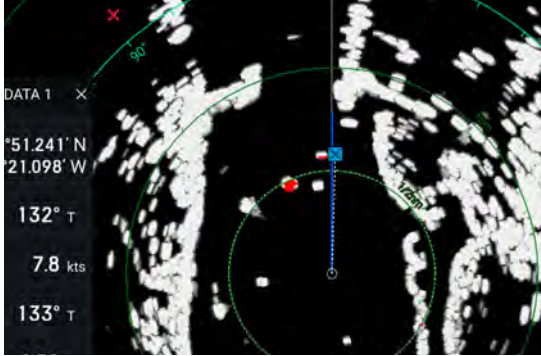
Three Array Size Options

4- and 6-foot options deliver superior target separation and range, while the 3-foot array provides open array performance in tight spaces.

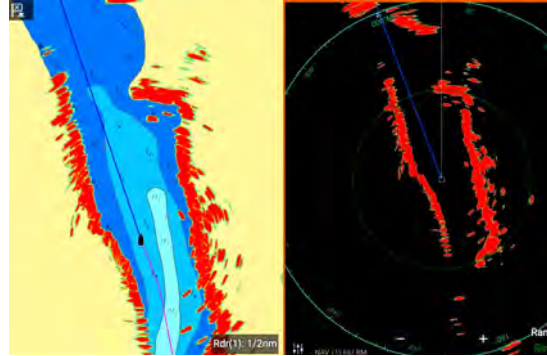
Two Power Output Options

The base model Cyclone operates at 55 Watts. Step up to improved weather and long-range performance with 110 Watt Cyclone Pro.

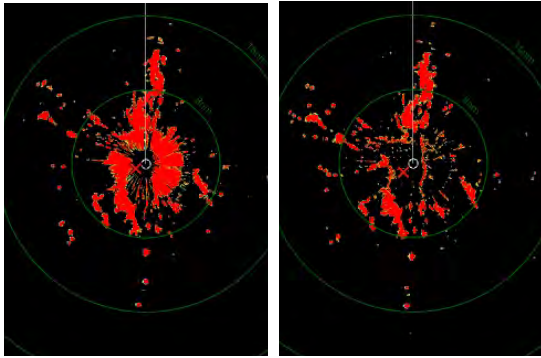
CYCLONE RADAR



Doppler Target Tracking



Precise shore line detail and long range target separation



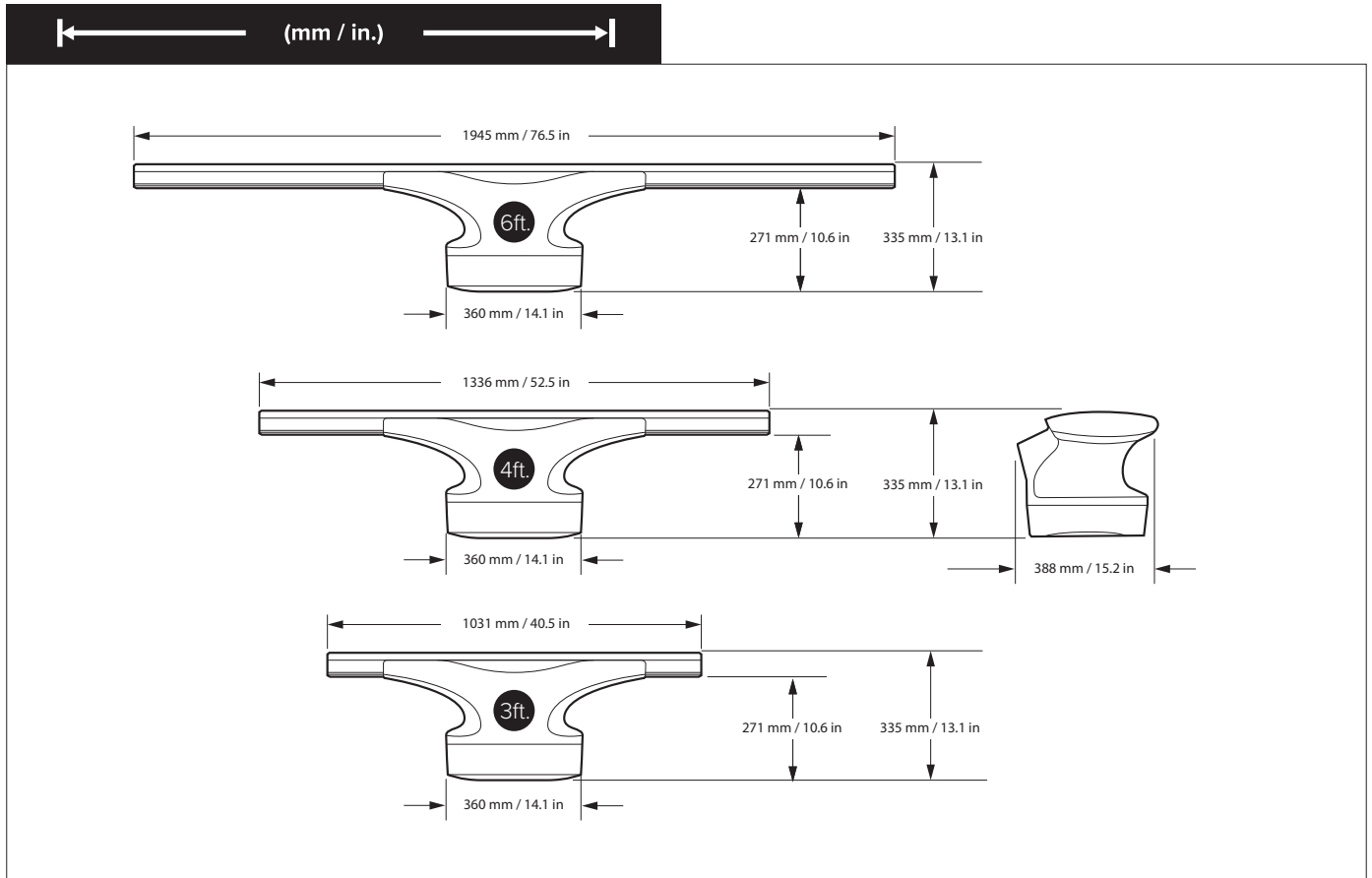
RangeFusion combines short and long pulses into single image



Performance tuned for locating sea birds



CYCLONE RADAR



Nautical Supplies are an Authorised Service Dealer for Raymarine



www.nauticalsupplies.com.au

Nautical Supplies Darwin:
80 Frances Bay Road, Darwin, NT
PO Box 37671, Winnellie, NT 0821
T: 08 8981 6651 | **F:** 08 8941 0251
E: Sales@nauticalsupplies.com.au

Nautical Supplies Cairns:
16 Liberty Street,
Portsmouth, QLD, 4870
T: 07 4050 0090
E: CairnsSales@nauticalsupplies.com.au