



Freedom at Your Fingertips

Water Purification Product Catalog



www.nauticalsupplies.com.au

Nautical Supplies Darwin:

80 Frances Bay Road, Darwin, NT
PO Box 37671, Winnellie, NT 0821

T: 08 8981 6651 | **F:** 08 8941 0251

E: Sales@nauticalsupplies.com.au

Nautical Supplies Cairns:

12-16 Liberty Street,
Portsmouth, QLD, 4870

T: 07 4050 0090

E: CairnsSales@nauticalsupplies.com.au

Servicing the Maritime Industry since 1978 | Nautical Supplies are a member of the AMI Group of Companies

Aqua Whisper Pro

Mid to Large Yachts
(40 - 80 ft / 12 - 24 m)

Features & Benefits

- Automatic FWF on frame.
- Automatic shutdown option.
- Robust, fail-safe design.



Specifications

	Model #	Production / Hr.	Production / 24 hrs.	AW PRO compact*	AW PRO modular*
PRODUCTION & WEIGHT	450-1	19 Gal / 71 L	450 Gal / 1,703 L	157 lbs / 71 kg	157 lbs / 71 kg
	700-1	29 Gal / 110 L	700 Gal / 2,650 L	160 lbs / 73 kg	160 lbs / 73 kg
	900-1	38 Gal / 142 L	900 Gal / 3,407 L	162 lbs / 73 kg	162 lbs / 73 kg
	900-2	38 Gal / 142 L	900 Gal / 3,407 L	169 lbs / 77 kg	169 lbs / 77 kg
	1400-2	58 Gal / 221 L	1,400 Gal / 5,300 L	175 lbs / 79 kg	175 lbs / 79 kg
	1800-2	58 Gal / 221 L	1,800 Gal / 6,814 L	180 lbs / 82 kg	180 lbs / 82 kg

*Weights based on single phase motor. For three phase motors subtract 9 lbs.

Electrical

	Phase	Pump Motor	Voltage VAC	Hz	Normal Operating Amps	Start Up Current
Plunger Pump	Single	High Pressure / Booster	110-115 / 220-230	50 / 60	110 / 220 30 / 15	110 / 220 100 / 50
	Three	High Pressure / Booster	220-230 / 380-460	50 / 60	220 / 380 - 440 11 / 5.5	220 / 380 - 460 30 / 15

Circuit Breaker Size	Operating AC Voltage	Phase	Recommended Circuit Breaker
Plunger Pump	110-115 / 220-230	Single	40 Ampere / 20 Ampere
	220 / 380 / 460	Three	15 Ampere / 10 Ampere / 10 Ampere

WARNING: This product can expose you to chemicals including Di(2-ethylhexyl) phthalate (DEHP), which is known to the state of California to cause cancer and birth defects or other reproductive harm. For more information go to www.P65Warnings.ca.gov.



www.nauticalsupplies.com.au

Nautical Supplies Darwin:

80 Frances Bay Road, Darwin, NT
PO Box 37671, Winnellie, NT 0821
T: 08 8981 6651 | F: 08 8941 0251
E: Sales@nauticalsupplies.com.au

Nautical Supplies Cairns:

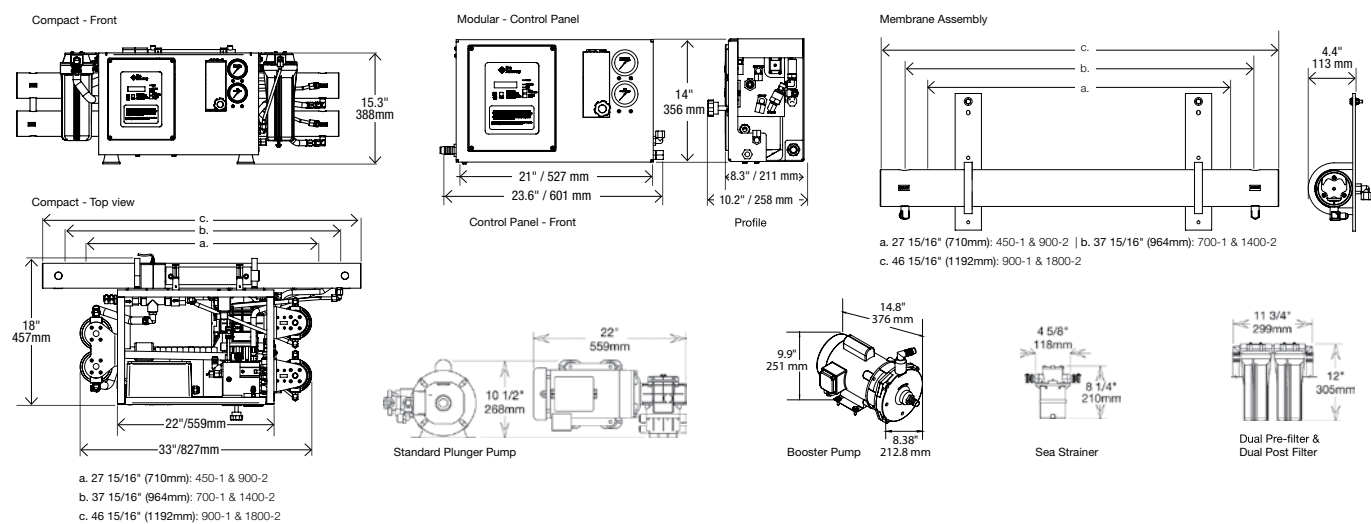
12-16 Liberty Street,
Portsmouth, QLD, 4870
T: 07 4050 0090
E: CairnsSales@nauticalsupplies.com.au

Servicing the Maritime Industry since 1978 | Nautical Supplies are a member of the AMI Group of Companies

For the Hands-On Boater

The Aqua Whisper Pro watermaker is suited for charter, offshore fishing, and ocean cruising. Its traditional manual functions and touch-pad control panel allows simple operation and digital + analog instrumentation for redundancy. The Aqua Whisper Pro's high pressure pump is engineered to be quieter than conventional high pressure pumps, and operates for 2,500 hours before any maintenance is required.

Dimensions



To maintain peak performance, always use genuine Parker Village Marine replacement parts. We reserve the right to change our specifications or standards without notice.

PRO Mini

Small Power Boats and Sailboats
(35 - 45 feet / 9 - 14 meters)

Features & Benefits

- Smallest line of watermaker.
- Easy access to main components.
- Low AC power consumption.
- Maximum system weight is 130 lbs.



Specifications

Model	Production / Hr.	Production / 24 Hrs.	Weight - Compact	Weight - Modular
PRO Mini 170	7 gal / 27 L	170 gal / 644 L	70 lbs / 32 kg	70 lbs / 32 kg
PRO Mini 350	15 gal / 55 L	350 gal / 1,325 L	127 lbs / 58 kg	89 lbs / 40 kg
PRO Mini 550	23 gal / 87 L	550 gal / 1,900 L	142 lbs / 64 kg	128 lbs / 57 kg
PRO Mini 750	31 gal / 117 L	750 gal / 2,850 L	150 lbs / 68 kg	130 lbs / 59 kg

Electrical

Model	Phase	Pump Motor	Voltage	Hz	H.P.	Normal Operating Amps
PRO Mini 170	N/A	High Pressure	12 / 24	N/A	.33	29 / 14
PRO Mini 350	Single	High Pressure	110 / 230	50 / 60	.33	6 / 3
PRO Mini 550	Single	High Pressure	110 / 230	50 / 60	1	13 / 6.5
PRO Mini 750	Single	High Pressure	110 / 220	50 / 60	2.1	26 / 13
PRO Mini 750	Single	Booster	110 / 220	50 / 60	0.5	7 / 3.5

Circuit Breaker Size	Operating Voltage	Phase	Recommended Circuit Breaker
PRO Mini 170	12 / 24 VDC		40 Ampere / 20 Ampere
	110 / 230 (AC)	Single	12 Ampere / 10 Ampere
PRO Mini 550	110 (AC)	Single	40 Ampere
PRO Mini 750	220 (AC)	Single	20 Ampere

WARNING: This product can expose you to chemicals including Di(2-ethylhexyl) phthalate (DEHP), which is known to the state of California to cause cancer and birth defects or other reproductive harm. For more information go to www.P65Warnings.ca.gov.



www.nauticalsupplies.com.au

Nautical Supplies Darwin:

80 Frances Bay Road, Darwin, NT
PO Box 37671, Winnellie, NT 0821

T: 08 8981 6651 | **F:** 08 8941 0251

E: Sales@nauticalsupplies.com.au

Nautical Supplies Cairns:

12-16 Liberty Street,
Portsmouth, QLD, 4870

T: 07 4050 0090

E: CairnsSales@nauticalsupplies.com.au

Servicing the Maritime Industry since 1978 | Nautical Supplies are a member of the AMI Group of Companies

Great Things Come in Small Packages

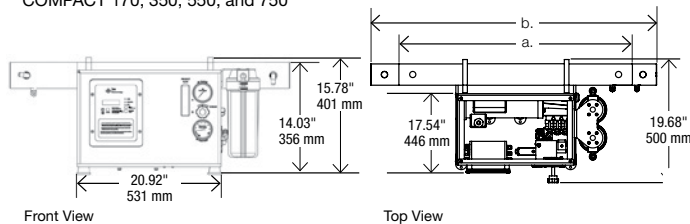
Production Capacity:

170, 350, 550, and 750 Gallons/Day

The low-hassle ProMini is engineered to fit anywhere. Measuring at about 2 - 3 cubic feet, sail and small power boaters have the opportunity and the convenience of a Sea Recovery watermaker without space restrictions. Featuring a simple interface, the ProMini can be monitored via the control panel or remote (optional). The ProMini can produce up to 7, 15, 23, or 31 gallons of fresh water per hour and is the perfect seaworthy companion for the solo cruiser.

Dimensions

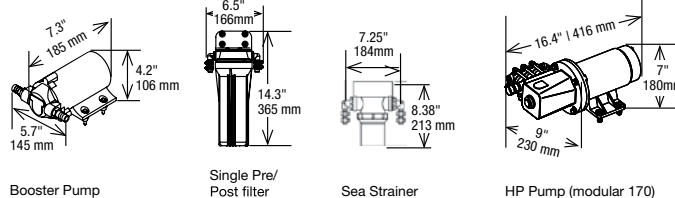
COMPACT 170, 350, 550, and 750



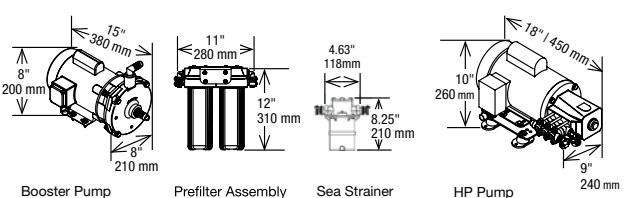
a. PRO Mini 350 & 550: 37.94" / 964 mm | b. PRO Mini 750: 46.94" / 1192 mm



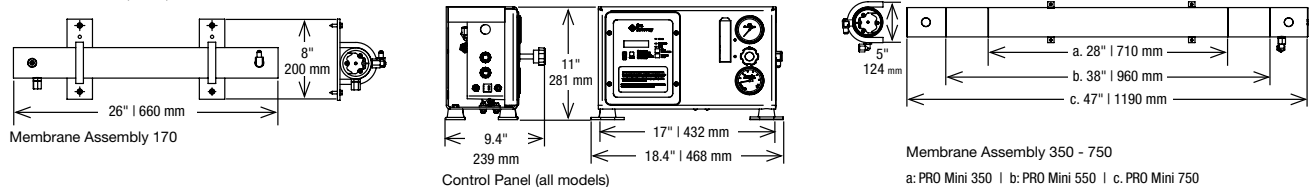
PRO Mini 170



PRO Mini 350-750



MODULAR 170, 350, 550 and 750



Membrane Assembly 350 - 750
a: PRO Mini 350 | b: PRO Mini 550 | c: PRO Mini 750

Duration Maintenance Kits

Product Family	Initial Load Out	3 Months (200 hrs.)	6 Months (500 hrs.)	12 Months (1000 hrs.)	24 Months (2000 hrs.)
PRO Mini (Standard Prefilters)	61012086	61012087	61012088	61012089	61012090
PRO Mini 350 (Commercial Prefilter/ Oil Water Separator)	61012111	61012112	61012113	61012114	61012115
PRO Mini 170 (Standard Prefilters)	61012091	61012092	61012093	61012094	61012095

To maintain peak performance, always use genuine Parker Village Marine replacement parts. We reserve the right to change our specifications or standards without notice.

WARNING: This product can expose you to chemicals including Di(2-ethylhexyl) phthalate (DEHP), which is known to the state of California to cause cancer and birth defects or other reproductive harm. For more information go to www.P65Warnings.ca.gov.

Aqua Matic

Mid to Mega Yachts
(40 - over 80 ft / 12 - over 24 m)



Features & Benefits

- An automated screen informs the operator of required maintenance.
- Available in a small footprint, compact frame for easy installation.
- Full color, touchscreen remote control.
- Ability to display in multiple languages.



Specifications

	Model #	Production / Hr.	Production / 24 hrs.	AQM Compact*	AQM Modular*
PRODUCTION & WEIGHT	450-1	19 Gal / 71 L	450 Gal / 1,703 L	153 lbs / 69 kg	149 lbs / 68 kg
	700-1	29 Gal / 110 L	700 Gal / 2,650 L	156 lbs / 71 kg	152 lbs / 69 kg
	900-1	38 Gal / 142 L	900 Gal / 3,407 L	158 lbs / 72 kg	154 lbs / 70 kg
	900-2	38 Gal / 142 L	900 Gal / 3,407 L	165 lbs / 75 kg	161 lbs / 73 kg
	1400-2	58 Gal / 221 L	1,400 Gal / 5,300 L	171 lbs / 76 kg	167 lbs / 76 kg
	1800-2	75 Gal / 284 L	1,800 Gal / 6,814 L	176 lbs / 80 kg	172 lbs / 78 kg

Electrical

	Phase	Pump Motor	Voltage VAC	Hz	NOA	SUC	Operating Voltage	Start Up Current
Plunger Pump	Single	HP / Booster	110-115 / 220-230	50 / 60	110 / 220 30 / 15	110 / 220 100 / 50	110-115 / 220-230	40 Ampere / 20 Ampere
	Three	HP / Booster	220-230 / 380-460	50 / 60	110 / 220 11 / 5.5	110 / 220 30 / 15	220 / 380 / 460	15 Ampere / 10 Ampere / 10 Ampere

*Production may vary +/-20% | GPD: Gallons per day • LPD: Liters per day

WARNING: This product can expose you to chemicals including Di(2-ethylhexyl) phthalate (DEHP), which is known to the state of California to cause cancer and birth defects or other reproductive harm. For more information go to www.P65Warnings.ca.gov.



www.nauticalsupplies.com.au

Nautical Supplies Darwin:

80 Frances Bay Road, Darwin, NT
PO Box 37671, Winnellie, NT 0821
T: 08 8981 6651 | F: 08 8941 0251
E: Sales@nauticalsupplies.com.au

Nautical Supplies Cairns:

12-16 Liberty Street,
Portsmouth, QLD, 4870
T: 07 4050 0090
E: CairnsSales@nauticalsupplies.com.au

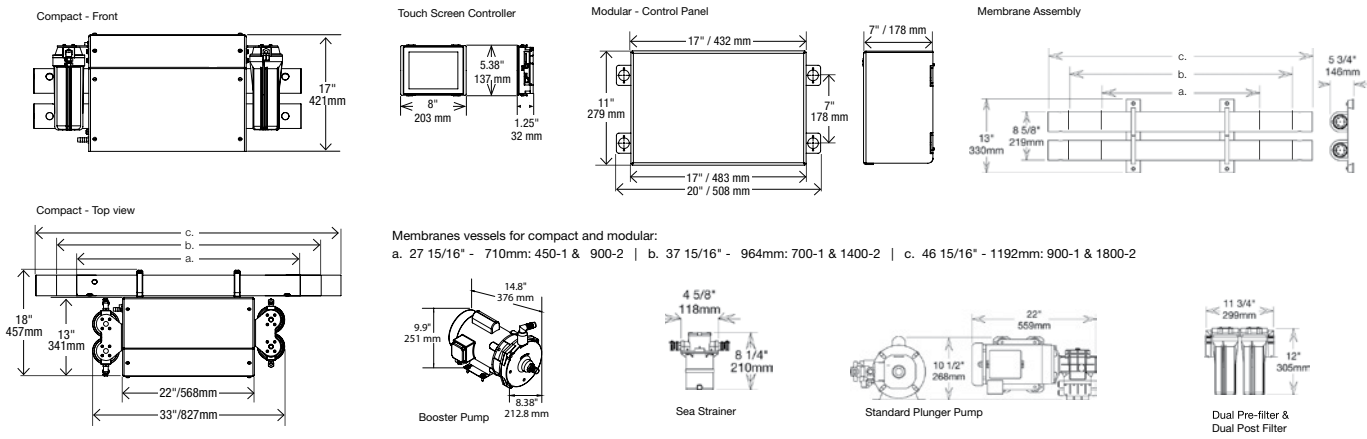
Servicing the Maritime Industry since 1978 | Nautical Supplies are a member of the AMI Group of Companies

Tomorrow's Technology, Here Today

The Aqua Matic watermaker features automatic operation with a touchscreen control panel that allows simple touch-and-go operations. Product water quality is now displayed in a bar graph format. Regulation and monitor systems function without the need of an operator. Sea Recovery's high-pressure design includes double O-ring seals on duplex stainless steel fittings to ensure leak-proof operation.



Dimensions



To maintain peak performance, always use genuine Parker Village Marine replacement parts. We reserve the right to change our specifications or standards without notice.

Aqua Matic Dual Pass

Mid to Mega Yachts
(over 80 ft / 24 m)



Features & Benefits

- Highest capacity to footprint/weight ratio.
- Up to 3400 GPD from sea water.
- Self-contained, plug and play system.
- Titanium high pressure pump provides an extended life cycle with salt water compatibility and quiet operations.
- Flexible installation and easy to operate.
- Globally supported by a network of more than 300 dealers and distributors.

Specifications

Model #	Fresh Water Production from Sea Water	Water Production from Sea Water	Water Production from Dock Water*	Weight
A400C-1800GPD-1400GPD	1800 GPD 6814 LPD	1400 GPD 5300 LPD	1400 GPD 5300 LPD	413 lbs / 187 kg
A400C-2600GPD-2200GPD	2600 GPD 9842 LPD	2200 GPD 8328 LPD	2200 GPD 8328 LPD	413 lbs / 187 kg
A400C-3400GPD-2900GPD	3400 GPD 12870 LPD	2900 GPD 10978 LPD	2900 GPD 10978 LPD	428 lbs / 194 kg

*Production may vary +/-20% | GPD: Gallons per day • LPD: Liters per day

Electrical

Pump Motor/HP	Voltage VAC	Hz	Phase	Normal Operating Amps	Start Up Current
Booster 1.5/2	220/380//230/460	50//60	3	4.8/2.4//5/2.5	14/7.2//15/7.5
Booster 1.5/1	115/230	50//60	3	14.2/7.1//18.2/9.1	54

Model #	Pump Motor/HP	Voltage VAC	Hz	Phase	Normal Operating Amps	Start Up Current	Circuit Breaker Amp
1800/1400	5	190/380//230/460	50/60	3	15.6/7.8//13.4/6.7	47/24//40/20	51/26/46/23
2600/2200-3400/2900	5//7.5	190/380//230/460	50/60	3	16.2/8.1/19/9.5	49/25//57/29	53/27//60/30
1800/1400	5	220/230	50/60	1	24/21.8	72/66	83/73

WARNING: This product can expose you to chemicals including Di(2-ethylhexyl) phthalate (DEHP), which is known to the state of California to cause cancer and birth defects or other reproductive harm. For more information go to www.P65Warnings.ca.gov.



www.nauticalsupplies.com.au

Nautical Supplies Darwin:

80 Frances Bay Road, Darwin, NT
PO Box 37671, Winnellie, NT 0821

T: 08 8981 6651 | F: 08 8941 0251

E: Sales@nauticalsupplies.com.au

Nautical Supplies Cairns:

12-16 Liberty Street,
Portsmouth, QLD, 4870

T: 07 4050 0090

E: CairnsSales@nauticalsupplies.com.au

Servicing the Maritime Industry since 1978 | Nautical Supplies are a member of the AMI Group of Companies

Tomorrow's Technology, Here Today

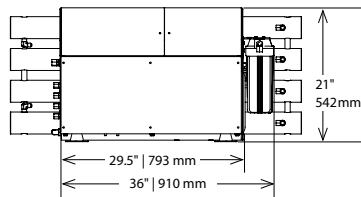
Introducing our new and most revolutionary member of the Sea Recovery Family. Specialized for those demanding ultra-pure and clean potable water.

Use Ultra-Pure Water to Leave Your Boat Spotless and Clean.

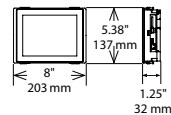


Dimensions

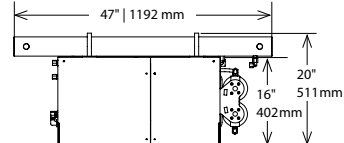
Front



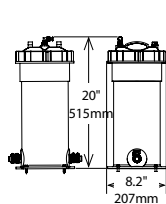
Touch Screen Controller



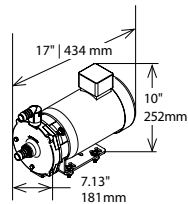
Top view



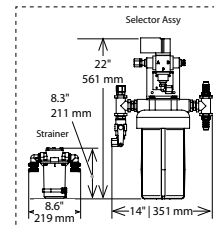
Pre-Filter Assembly



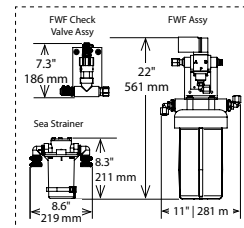
Booster Pump



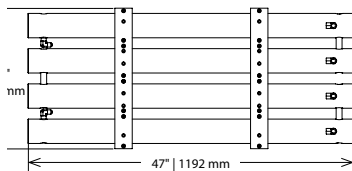
Doc Water Feed



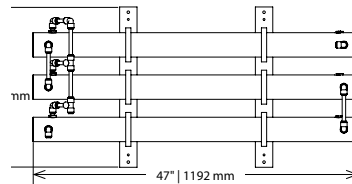
SW / FWF Feed



Membrane Assembly - Sea Water



Membrane Assembly - Tap Water



Aqua Matic XL

Large to Mega Yachts
(over 80 ft / 24 m)



Features & Benefits

- Installation connection & piping (marine vessel installations).
- All system readings can be selected to display either U.S. standard or metric measurements.
- Tank level switches may be installed to control shut down and also prevent start up if the tanks are full.
- All aspects of operation are displayed on straight forward screens providing simple, intuitive information and directions.
- For those who demand simplicity, excellence, automation, elite technology, and low maintenance, the Aqua Matic XL is the only choice.



Specifications

	Model #	Production / Hr.	Production / 24 hrs.	Weight - Compact*	Weight - Modular*
PRODUCTION & WEIGHT	2200	92 Gal / 347 L	2200 Gal / 8328 L	413 lbs / 187 kg	390 lbs / 176 kg
	2600	108 Gal / 410 L	2600 Gal / 9842 L	413 lbs / 187 kg	400 lbs / 181 kg
	2800	117 Gal / 442 L	2800 Gal / 10599 L	428 lbs / 194 kg	415 lbs / 188 kg
	3400	142 Gal / 536 L	3400 Gal / 12870 L	439 lbs / 199 kg	432 lbs / 196 kg

*Production may vary +/-20% | GPD: Gallons per day • LPD: Liters per day

Electrical

	Phase	Booster Pump Motor	Voltage VAC	Hz	Normal Operating Amps	Start Up Current
	Three	1.5/2	220/380//230/460	50 / 60	5.2/2.6//5.8/2.9	24/16//27/14
	Single	1.5/1	115/230	50 / 60	14.2/7.1//18.2/9.1	54

Circuit Breaker Amp Rating	High Pressure Pump / Motor	AC Voltage	Hz	Phase*	Normal Operating Amps	Circuit Breaker Amp
2200 - 3400 GPD	5 HP	190 / 380	50	3	15.6 / 7.8	80/60
2200 - 3400 GPD	5 HP	208 / 230 / 460	60	3	13.9 / 13.4 / 6.7	80/60
2200 - 3400 GPD	5 HP	230/220	50 / 60	1	21.8//24	80/85

*Production may vary +/-20% | GPD: Gallons per day • LPD: Liters per day



www.nauticalsupplies.com.au

Nautical Supplies Darwin:

80 Frances Bay Road, Darwin, NT
PO Box 37671, Winnellie, NT 0821

T: 08 8981 6651 | F: 08 8941 0251

E: Sales@nauticalsupplies.com.au

Nautical Supplies Cairns:

12-16 Liberty Street,
Portsmouth, QLD, 4870

T: 07 4050 0090

E: CairnsSales@nauticalsupplies.com.au

Servicing the Maritime Industry since 1978 | Nautical Supplies are a member of the AMI Group of Companies

The Simple Things in Life Make the Difference

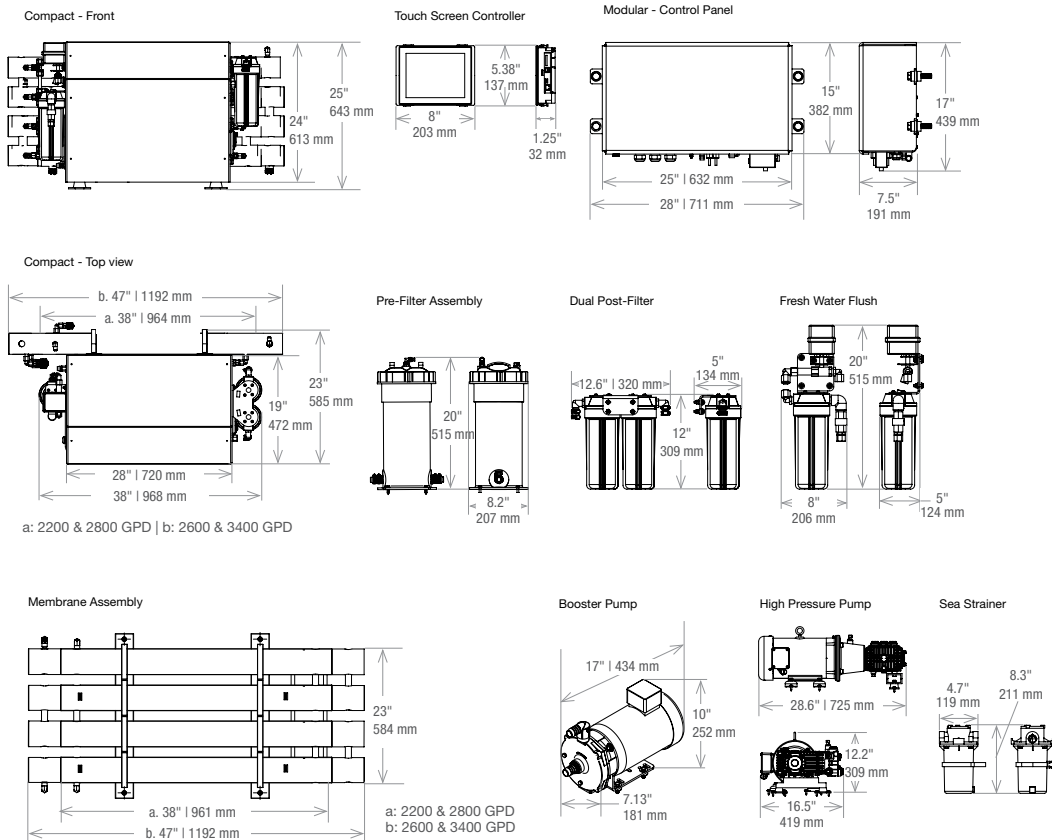
Robust Engineering and Innovative Design by Sea Recovery's Engineering Team.

Smooth operation and the lowest sound emission in the industry are gained through the design of specific high-pressure pumps ideally matched for flow and pressure characteristics.

Constructed of a lightweight, epoxy-coated frame, both the compact and modular series units utilize only the highest quality marine grade materials and components. Upgrading a model to a higher watermaking capacity is done by simply installing additional reverse osmosis membranes to the desalination system. Unique among watermakers, Sea Recovery delivers complete R.O. systems, ready to produce water immediately after installation. All plumbing for on board use is also included.



Dimensions



WARNING: This product can expose you to chemicals including Di(2-ethylhexyl) phthalate (DEHP), which is known to the state of California to cause cancer and birth defects or other reproductive harm. For more information go to www.P65Warnings.ca.gov.

ULTR^o CLEAR^{DFII}

1,200 GPD to 2,400 GPD

Features & Benefits

- Direct feed from watermaker.
- Simple, reliable, and easy to use.
- Highly efficient, fully automatic operation.
- Spot free rinse.



Specifications

Part No.	Capacity	Production/Hr	Production/Day	Number of Membranes	Electrical VAC/Ph/Hz	Full Load Amps (FLA)	Weight
UC1200-116	1200 GPD	50 Gal/189 Lit	1200 Gal/4536 Lit	1	110/1/60	5.2	50 lbs/23kg
UC1200-215	1200 GPD	50 Gal/189 Lit	1200 Gal/4536 Lit	1	230/1/50	3.3	50 lbs/23kg
UC2400-116	2400 GPD	100 Gal/378 Lit	2400 Gal/9072 Lit	2	110/1/60	5.2	55 lbs/25kg
UC2400-215	2400 GPD	100 Gal/378 Lit	2400 Gal/9072 Lit	2	230/1/50	3.3	55 lbs/25kg

*Higher capacity systems are available upon request.



www.nauticalsupplies.com.au

Nautical Supplies Darwin:

80 Frances Bay Road, Darwin, NT
PO Box 37671, Winnellie, NT 0821

T: 08 8981 6651 | F: 08 8941 0251

E: Sales@nauticalsupplies.com.au

Nautical Supplies Cairns:

12-16 Liberty Street,
Portsmouth, QLD, 4870

T: 07 4050 0090

E: CairnsSales@nauticalsupplies.com.au

Servicing the Maritime Industry since 1978 | Nautical Supplies are a member of the AMI Group of Companies

Simple, Direct Feed to Your Current Watermaker

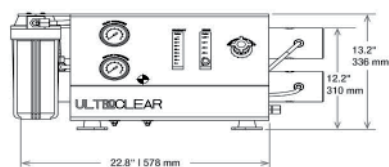
The Ultro Clear DF works with your RO system to convert sea water to double purified water. Its reliable piping connection allows direct feed that activates an automatic operation, and produces spot free water when water is directly fed into the system.

Ultra-pure water is 99% free of water solids. Perfect for rinsing hulls, windows, and extending the life of your boating equipment. It gently lifts debris and dries spot free.

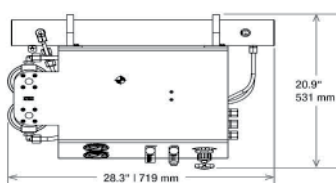


Dimensions

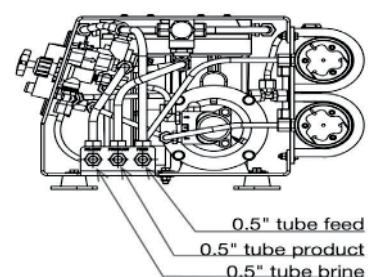
Front View



Top View



Side View



WARNING: This product can expose you to chemicals including Di(2-ethylhexyl) phthalate (DEHP), which is known to the state of California to cause cancer and birth defects or other reproductive harm. For more information go to www.P65Warnings.ca.gov.

LWM Series Modular Watermaker

145-180 GPD – 530-681 LPD

Features & Benefits

- Available for 12V, 24V power supplies as shown.
- 5 micron cleanable prefilter.
- Powder coated mounting brackets included.
- Control manifold pressure regulator ensures consistent pressure and prevents over or under pressurization of the unit. Adjustable to allow operation in brackish or fresh water.
- Acrylic flowmeter to monitor production.
- High quality spiral wound TFC reverse osmosis membranes.
- Magnetic drive boost pump.
- Stainless steel glycerin filled pressure gauges.
- High pressure pump impervious to the corrosive sea water environment and designed for maximum efficiency.



Specifications

Model	Part Number	Electrical Supply Voltage-DC / Amps	Capacity GPH / LPH	Weight lbs. / kg
LWM-145	90-8200	12 / 15	6/23	150/68
	90-8622	2 / 7.5		
LWM-180	90-8512	12/ 22	7.5/28.4	225/102
	90-8596	24/ 11		

WARNING: This product can expose you to chemicals including Di(2-ethylhexyl) phthalate (DEHP), which is known to the state of California to cause cancer and birth defects or other reproductive harm. For more information go to www.P65Warnings.ca.gov.



www.nauticalsupplies.com.au

Nautical Supplies Darwin:

80 Frances Bay Road, Darwin, NT
PO Box 37671, Winnellie, NT 0821

T: 08 8981 6651 | F: 08 8941 0251

E: Sales@nauticalsupplies.com.au

Nautical Supplies Cairns:

12-16 Liberty Street,
Portsmouth, QLD, 4870

T: 07 4050 0090

E: CairnsSales@nauticalsupplies.com.au

Servicing the Maritime Industry since 1978 | Nautical Supplies are a member of the AMI Group of Companies

Spares and Consumables

Part	Description
85-0050	Pump Oil
33-0117	5 Micron Filter
33-0311	Carbon Flush Filter
33-3000	Membrane Element LWM 145
33-3001	Membrane Element LWM 180**
33-3038	Membrane Element LWM 145***
90-0005	Filter Housing O-Ring
99-6881	Filter Wrench
70-6181	HP Pump Service Kit

**All system requires 2 x 33-3001 per system

***This used for spares only single 40” vessel.

Part	Description
90-2512	Membrane O-Ring Kit
40-0241	Salinity Probe
85-0102	Cleaning Kit
85-0103	Preservation Kit
70-6181	Kit, Pump, Routine Service
99-1990A	Digital Handheld TDS Meter
70-0036	Belt, Models 145
70-0168	Belt, Models 200

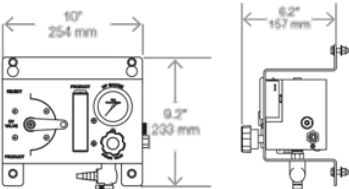
Recommended Options -
LTM 145-300 12/24 VDC System

Part Number	Description
90-1288	Manual Fresh Flush, Assembly
61012118	Kit, Installation, 145-500 GPD
V016020001	Booster Pump/Motor 12VDC
V016020002	Booster Pump/Motor 24VDC
61012116	Sea Strainer, 40 Mesh, Assembly

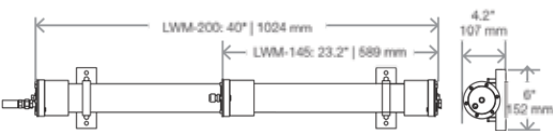


Dimensions

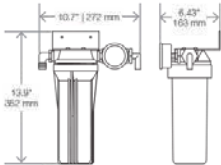
System Manifold



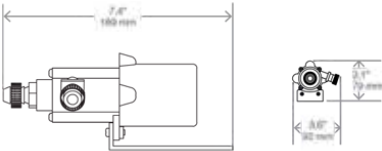
Membrane Assembly



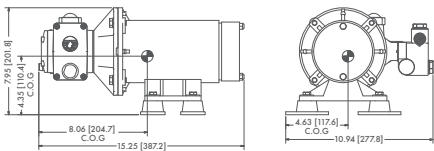
Fresh Water Flush



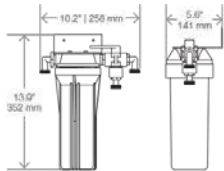
Booster Pump



High Pressure Pump



Pre-Filter



To maintain peak performance, always use genuine Parker Village Marine replacement parts. We reserve the right to change our specifications or standards without notice.

LTM Series Modular Watermakers

145 - 1,800 GPD – 530 - 6,800 LPD

Features & Benefits

- Powder coated mounting brackets included.
- 5 micron cleanable prefilter.
- Control manifold pressure regulator ensures consistent pressure and prevents over or under pressurization of the unit. Adjustable to allow operation in brackish or fresh water.
- Magnetic drive boost pump.
- High quality spiral wound TFC reverse osmosis membranes.
- Stainless steel glycerin filled pressure gauges.
- High pressure plunger pump with stainless steel 316 head.



Specifications

Model	Part Number	Electrical Supply Volts / Ph / Hz / Amps	Capacity GPH / LPH	Weight lbs. / kg
LTM-145	90-8200PH	12/29	6/23	92/42
	90-8622PH	24/14.5		
LTM-300	90-8154PH	12/34	12.5/47.3	92/42
	90-8596PH	24/7		
LTM-350	90-6009	12 VDC/60	14.6/55	92/42
	90-6010	24 VDC/30		
LTM-500	90-6019	110/1/60/18	21/79	92/42
	90-6047	220/1/60/8		
	90-6048	230/1/50/8		
LTM-800	90-6049	110/1/60/18	33/125	100/45
	90-6050	220/1/60/9		
	90-6051	230/1/50/8		
	90-6079	230-460/3/50-60/6-4		
LTM-1000	90-6052	220/1/60/12**	42/158	133/60
	90-6053	230/1/50/12.5		
	90-6080	230-460/3/50-60/8-6.5		
LTM-1300	90-6054	220/1/60/12**	54/205	153/70
	90-6055	230/1/50/12.5		
	90-6082	230/460/3/50-60/8.6.5		
LTM-1800	90-6083	110/1/50-60/18	75/284	168/76
	90-6058	220/1/60/12		
	90-6078	230/1/50		
	90-6076	380/3/50/7.5		
	90-6077	460/3/60/7		

*Membrane elements are sold separately.

**For 110/50/60/1 please inquire with factory.



www.nauticalsupplies.com.au

Nautical Supplies Darwin:

80 Frances Bay Road, Darwin, NT
PO Box 37671, Winnellie, NT 0821

T: 08 8981 6651 | **F:** 08 8941 0251

E: Sales@nauticalsupplies.com.au

Nautical Supplies Cairns:

12-16 Liberty Street,
Portsmouth, QLD, 4870

T: 07 4050 0090

E: CairnsSales@nauticalsupplies.com.au

Servicing the Maritime Industry since 1978 | Nautical Supplies are a member of the AMI Group of Companies

For Sail Boat and Fishing Vessel Applications

The LTM Series offers high quality Parker Village Marine engineered components with straightforward manual operation. Driven by AC motors, the modular configuration comes in ready to mount modules for

flexible installation options. Integral to every LTM unit is a control manifold, which includes a regulator and a bypass valve.

Key Feature

Optional salinity monitor and diversion valve system for water quality assurance.

Salinity monitor and diversion valve

- P/N 90-0115 110V 500-800 GPD
- P/N 90-0116 220V 500-800 GPD
- P/N 90-0127 220V 1300-1800 GPD



Spares and Consumables

Part	Description
85-0050	Pump Oil
33-0117	5 Micron Filter (up to model 800)
33-0052	5 Micron Filter (model 1000 and up)
33-0311	Carbon Flush Filter
33-0238	Membrane Element
85-0103	Preservation Kit
90-0005	Filter Housing O-Ring (up to model 800)
33-0271	Filter Housing O-Ring (model 1000 and up)
90-2512	Membrane O-Ring Kit
40-0241	Salinity Probe
85-0102	Cleaning Kit

Recommended Options - LTM 145-300 12.24 VDC System

Part Number	Description
90-1288	Manual Fresh Flush, Assembly
61012118	Kit, Installation, 145-500 GPD
V016020001	Booster Pump/Motor 12VDC
V016020001	Booster Pump/Motor 24VDC
61012116	Sea Strainer, 40 Mesh, Assembly

To maintain peak performance, always use genuine Parker Village Marine replacement parts. We reserve the right to change our specifications or standards without notice.

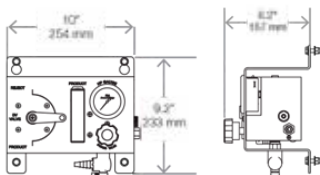
WARNING: This product can expose you to chemicals including Di(2-ethylhexyl) phthalate (DEHP), which is known to the state of California to cause cancer and birth defects or other reproductive harm. For more information go to www.P65Warnings.ca.gov.

Optional Accessories

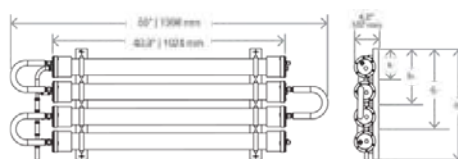
Part Number	Description	System Capacity (GPD/LPH)	System Voltage Voltage/Hz/Phase
90-0215	Manual Fresh Flush, Assembly	All	All
61012010	Kit, Installation, 300-1800 GPD	All	All
V006060001	Sea Strainer, 40 Mesh, Assembly	300-500/47.3-79	All
0421056739	Sea Strainer 3/4 Bronze	800-1800/125-284	All
B016380002	Booster Pump/Motor 12VDC	300-47.3	12VDC
B016380003	Booster Pump/Motor 24VDC	300-47.3	24VDC
V016030001	Booster Pump 110/220V, 1PH, Assy	500/79	110-220/1/50/60/1
B016080026	Booster Pump Assembly 110/230/50/80/1P	800-1800/125-284	110-230/50/60/1
B016080027	Booster Pump Assembly 208-460/50/60/3P	800-1800/125-284	208-460/50/60/1

Dimensions

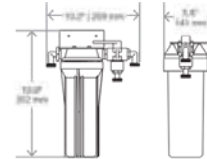
System Manifold



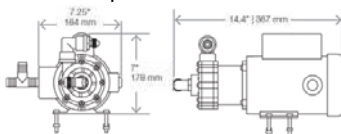
Membrane Assembly



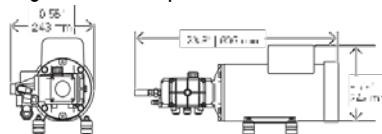
Fresh Water Flush



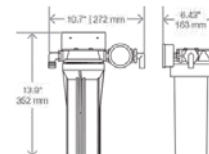
Booster Pump



High Pressure Pump



Pre-Filter



H2O ECO

The Revolutionary Energy Recovery Watermarker

17 - 25 Gal/Hour – 63 - 95 Lit/Hour



Features & Benefits

- Energy recovery device
 - Recovers up to 14.5% of power on all models
- AC and DC models available
- Fully Automatic Operation
- Compact configuration



Specifications

Part Number	Voltage (DC/AC)	Capacity (GPD)	LPH	DC Power (Watts)	AC (NOA)	Weight
A012C-111	12	400	63	240		120lbs / 54kg
A012C-121	24	400	63	240		120lbs / 54kg
A012C-211	12	600	95	437		125lbs / 57kg
A012C-221	24	600	95	437		125lbs / 57kg
A012C-311	110/50 - 60/1	400	63		5.8	120lbs / 54kg
A012C-321	220/50 - 60/1	400	63		2.9	120lbs / 54kg
A012C-411	110/50 - 60/1	600	95		9	125lbs / 57kg
A012C-421	220/50 - 60/1	600	95		4.5	125lbs / 57kg

NOA = Normal Operation Amps

⚠ WARNING: This product can expose you to chemicals including Di(2-ethylhexyl) phthalate (DEHP), which is known to the state of California to cause cancer and birth defects or other reproductive harm. For more information go to www.P65Warnings.ca.gov.



www.nauticalsupplies.com.au

Nautical Supplies Darwin:

80 Frances Bay Road, Darwin, NT
 PO Box 37671, Winnellie, NT 0821
T: 08 8981 6651 | **F:** 08 8941 0251
E: Sales@nauticalsupplies.com.au

Nautical Supplies Cairns:

12-16 Liberty Street,
 Portsmith, QLD, 4870
T: 07 4050 0090
E: CairnsSales@nauticalsupplies.com.au

Servicing the Maritime Industry since 1978 | Nautical Supplies are a member of the AMI Group of Companies

The Low Power Consumption Choice

The new Patent Pending Energy recovery Device H2O ECO is engineered for boaters with limited power options. Featuring automatic operation, it is ideal for Catamarans and sail boats.



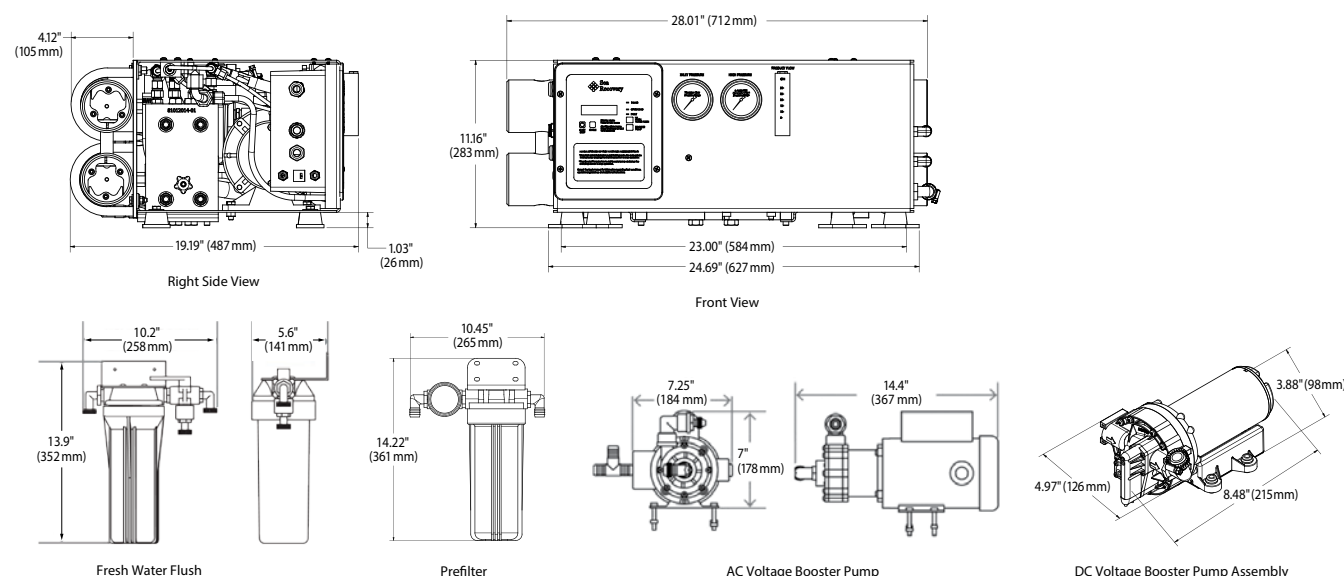
Key Features

- Compact robust design
- Smooth operation
- Small footprint

Duration Maintenance Kits

Product Family	Initial Load Out	3 Months (200 hrs.)	6 Months (500 hrs.)	12 Months (1000 hrs.)	24 Months (2000 hrs.)
H2O ECO (Standard Prefilters)	61012096	61012097	61012098	61012099	61012100

Dimensions



To maintain peak performance, always use genuine Parker Village Marine replacement parts. We reserve the right to change our specifications or standards without notice.

Seafari Versatile

450 - 1800 Gal/Day

1705 - 6815 Lit/Day



Features & Benefits

- Remote Mount Cube - for easy access to system controls.
- Equipped with a failsafe Product Water Diversion Valve allowing only safe drinking water to enter storage tanks.
- High rejection, high yield, commercial grade, and chemical resistant Membranes.



Specifications

Part Number	Model	Per 24 Hours Gal / Lit	Per Hours Gal / Lit	Weight
H24C/H25M-450	450-1	450 / 1,705	18 / 70	118 lbs / 54 kg
H24C/H25M-700	700-1	700 / 2,650	26 / 110	125 lbs / 57 kg
H24C/H25M-900	900-1	900 / 3,405	38 / 140	136 lbs / 62 kg
H24C/H25M-1400	1400-2	1,400 / 5,300	58 / 220	147 lbs / 67 kg
H24C/H25M-1800	1800-2	1,800 / 6,815	75 / 285	150 lbs / 68 kg

WARNING: This product can expose you to chemicals including Di(2-ethylhexyl) phthalate (DEHP), which is known to the state of California to cause cancer and birth defects or other reproductive harm. For more information go to www.P65Warnings.ca.gov.



www.nauticalsupplies.com.au

Nautical Supplies Darwin:

80 Frances Bay Road, Darwin, NT
PO Box 37671, Winnellie, NT 0821

T: 08 8981 6651 | F: 08 8941 0251

E: Sales@nauticalsupplies.com.au

Nautical Supplies Cairns:

12-16 Liberty Street,
Portsmouth, QLD, 4870

T: 07 4050 0090

E: CairnsSales@nauticalsupplies.com.au

Servicing the Maritime Industry since 1978 | Nautical Supplies are a member of the AMI Group of Companies

Space Efficient Design

Along the coast or around the world, the Seafari Versatile is perfect for weekend fishing or blue water cruising. Its user-friendly operating system and rugged build withstands the ocean's harshest conditions, while maintaining its high level of quality.

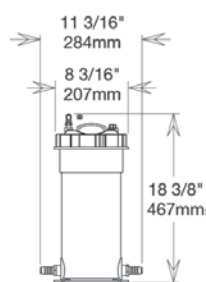
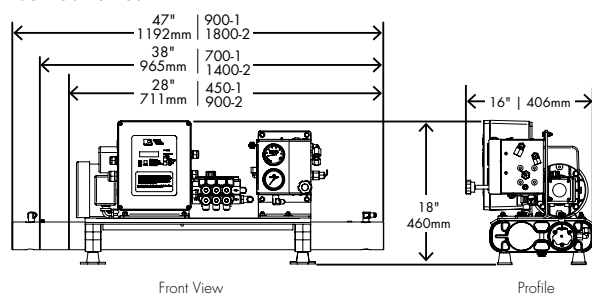


Membrane/Vessel Assembly Upgrades

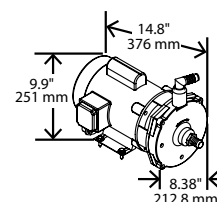
Part	Description
Upgrade from 450 to 900 gpd	
B240210013	MVA UPGRADE 450 GPD (Contained Series)
B240210010	MVA UPGRADE 450 GPD (Modular Series)
Upgrade from 700 to 1400 gpd	
B240210014	MVA UPGRADE 700 GPD (Contained Series)
B240210011	MVA UPGRADE 700 GPD (Modular Series)
Upgrade from 900 to 1800 gpd	
B240210015	MVA UPGRADE 900 GPD (Contained Series)
B240210012	MVA UPGRADE 900 GPD (Modular Series)

Dimensions

Self Contained

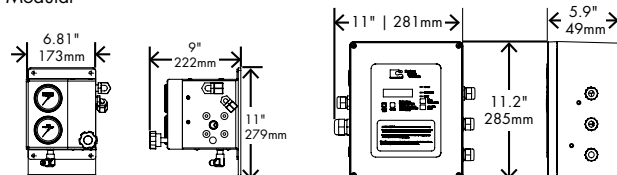


Commercial Pre-Filter & Oil Water Separator



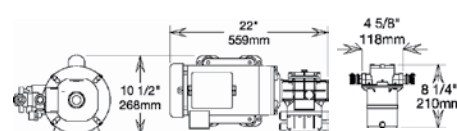
Booster Pump

Modular



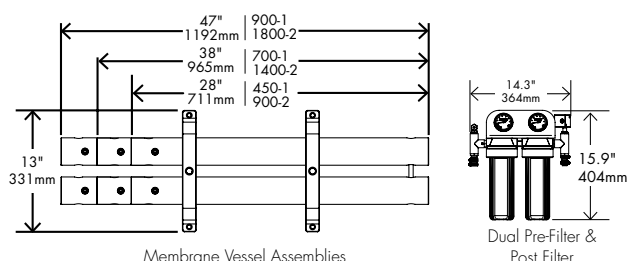
Remote Cube - Front & Profile

Control Box - Front & Profile



Motor Pump Assembly

Sea Strainer



Membrane Vessel Assemblies

Dual Pre-Filter & Post Filter

Pure Water Series

400-2000 GPD (1.5-7.5 m³/day)



Features & Benefits

- Monel mesh strainer and dual sediment prefilters.
- Maintenance-free air/oil separator allows operation while underway.

Specifications

Model	Part Number	Power Volts / phase / Hertz / Amps	Capacity GPH-m ³ / D	Dimensions W x D x H inch (cm)	Weight lbs. / kg
PW-400	90-8633	110 / 1 / 60 / 13	17-1.5	27 (69) x 24 (61) x 16 (41)	225/102
	90-8217	220 / 1 / 60 / 8			
	90-8513	220 / 3 / 60 / 6			
	90-8036	230 / 1 / 50 / 8			
	90-8238	380 / 3 / 50 / 3			
	90-8037	440 / 3 / 60 / 3			
PW-600	90-8125	110 / 1 / 60 / 21	25-2.3	54 (137) x 24 (61) x 16 (41)	350/159
	90-8006	220 / 1 / 60 / 11			
	90-8223	220 / 3 / 60 / 7			
	90-8636	230 / 1 / 50 / 11			
	90-8635	380 / 3 / 50 / 4			
	90-8634	440 / 3 / 60 / 4			
PW-800	90-8028	220 / 1 / 60 / 17	34-3.0	54 (137) x 24 (61) x 16 (41)	350-159
	90-8637	220 / 3 / 60 / 11			
	90-8047	230 / 1 / 50 / 15			
	90-8638	380 / 3 / 50 / 6			
	90-8292	440 / 3 / 60 / 6			
PW-1200	90-8038	220 / 1 / 60 / 17	50-4.5	54 (137) x 24 (61) x 16 (41)	400-182
	90-8210	220 / 3 / 60 / 11			
	90-8606	230 / 1 / 50 / 15			
	90-8212	380 / 3 / 50 / 6			
	90-8040	440 / 3 / 60 / 6			
PW-1600	90-8600	220 / 1 / 60 / 19	67-6.0	54 (137) x 28 (81) x 16 (41)	425/193
	90-8603	220 / 3 / 60 / 16			
	90-8601	230 / 1 / 50 / 25			
	90-8017	380 / 3 / 50 / 8			
	90-8604	440 / 3 / 60 / 8			
PW-2000	90-8554	220 / 1 / 60 / 19	84-7.6	54 (137) x 28 (81) x 16 (41)	450/205
	90-8039	220 / 3 / 60 / 16			
	90-8597	230 / 1 / 50 / 25			
	90-8598	230 / 1 / 50 / 25			
	90-8011	440 / 3 / 60 / 8			

*Models 400 and 600 membrane rack can be mounted on top or on back of frame, add 4"/10cm to height or depth. **Only 1300 and 1800 models are available for 3 phase power. Extra transformer box included.



www.nauticalsupplies.com.au

Nautical Supplies Darwin:

80 Frances Bay Road, Darwin, NT
PO Box 37671, Winnellie, NT 0821

T: 08 8981 6651 | F: 08 8941 0251

E: Sales@nauticalsupplies.com.au

Nautical Supplies Cairns:

12-16 Liberty Street,
Portsmouth, QLD, 4870

T: 07 4050 0090

E: CairnsSales@nauticalsupplies.com.au

Servicing the Maritime Industry since 1978 | Nautical Supplies are a member of the AMI Group of Companies

For Commercial Marine Applications

The Pure Water (PW) Series is designed to provide installation flexibility, superior performance, and extended service life in the most rugged conditions.

Designed for 24/7, continuous duty applications, where reliable fresh water supply is critical.

Optional Accessories

Part	Description
CMF400	Media Filter System For Use with PW400
CMF2000	Media Filter System For Use with PW600-PW2000
90-0215	400-600 Manual Flush
90-0571	800-2000 Manual Flush
90-1783	400-600 Automatic Flush
91-0412	800-2000 Automatic Flush
Call for #	400-2000 Boost Pump CMF Option
20-5012	Touchscreen Remote Control

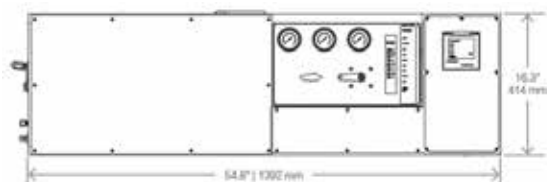
Required Membranes

Part	Description
33-2519	ELEMENT, SEA WATER, 2519, SW
33-0238	ELEMENT, SEA WATER, SW-2538

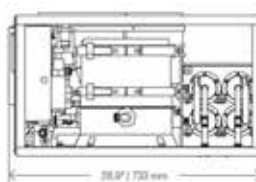


Dimensions

Front View



Profile View



WARNING: This product can expose you to chemicals including Di(2-ethylhexyl) phthalate (DEHP), which is known to the state of California to cause cancer and birth defects or other reproductive harm.
For more information go to www.P65Warnings.ca.gov.

Dockside ULTRO Clear System

3,400 GPD

Features & Benefits

- Dirty to spot free with ease and reliability.
- Enclosed in a rugged case for durability.
- No worry transfer from boat to dock, it floats!
- All connections are external, no need to open the case.
- Internal filter easily changed from external access lid.
- Mobile, versatile, and portable.

The Dockside UltRO Clear is ideal for spot free rinsing/cleaning of your boats interior and exterior.

You'll enjoy the benefits of having purified water to drink as ultra pure water is 99% free of all water solids. It is perfect for rinsing hulls, windows, glass shower enclosures, stainless steel, and more. It will help extend the life of your vessel as it gently lifts debris and dries spot free as the absence of dissolved leaves no water spots behind.



Specifications

Part No.	Production/Hr	Production/Day	Number of Membranes	Electrical VAC/Ph/Hz	Amps (FLA)	Weight	Dimensions Inch (cm)
DUC3400-116	142 Gal/ 536 Lit	3400 Gal/ 2869 Lit	3	110/1/60	10	95 lbs/ 43.1kg	32.6 x 18.4 x 11.1 (82.8 x 46.74 x 28.20)

*Higher capacity systems are available upon request.

WARNING: This product can expose you to chemicals including Di(2-ethylhexyl) phthalate (DEHP), which is known to the state of California to cause cancer and birth defects or other reproductive harm. For more information go to www.P65Warnings.ca.gov.



www.nauticalsupplies.com.au

Nautical Supplies Darwin:

80 Frances Bay Road, Darwin, NT
PO Box 37671, Winnellie, NT 0821

T: 08 8981 6651 | **F:** 08 8941 0251

E: Sales@nauticalsupplies.com.au

Nautical Supplies Cairns:

12-16 Liberty Street,
Portsmouth, QLD, 4870

T: 07 4050 0090

E: CairnsSales@nauticalsupplies.com.au

Servicing the Maritime Industry since 1978 | Nautical Supplies are a member of the AMI Group of Companies

RWM-30 Fresh Water Filtration System

30 GPH (114 LPH)



Features & Benefits

- **5μ Cartridge Filter:** Non-corrosive NSF housing, rated at 10 bar working pressure, complete with one (1) 5μ nominal polypropylene filter cartridge.
- **Carbon Cartridge Filter:** Granulated carbon cartridge.
- **High Pressure Pump:** Non-corrosive NSF certified positive displacement pump.
- **Membrane Elements:** Spiral-wound, UF, thin film composite membrane.
- **Ultraviolet Sterilizer:** NSF UV sterilizer



Specifications

Model	Part Number	Power Supply	Capacity GPH/LPH	Dimensions WxDxH inch/cm	Weight lbs/kg
RWM-30	0500117	12/24 VDC	30/114	6.6/16.8x13.6/34.5x18.5/47	25/11.3*

*Weight of the system is approx. 25 pounds. Less hoses and cables.

WARNING: This product can expose you to chemicals including Di(2-ethylhexyl) phthalate (DEHP), which is known to the state of California to cause cancer and birth defects or other reproductive harm. For more information go to www.P65Warnings.ca.gov.

Coral Sea C-3 Watermakers

3,800 - 6,800 GPD
14-26 M³/D

Features & Benefits

- Enhanced safety designed into the process and operation of the system.
- Easy to maintain.
- Vertical configuration standard.
- Optional configurations voltages available upon request.
- Advanced digital controls.
- Short manufacturing lead times.
- Oil-free pump.
- Large HMI interface.
- All automatic controls and instruments for safe & reliable operations.



Specifications

Part Number A550 Vertical, A551 Horizontal, A552 Modular	Voltage	Capacity M ³ /Day	Permeate GPD	Vertical Dimensions (in/cm)		
				Length	Width	Height
-13	440-480 / 3 / 60	14	3800	30/76	34/86	60/152
-15	380-410 / 3 / 50	14	3800	30/76	34/86	60/152
-23	440-480 / 3 / 60	16	4200	30/76	34/86	60/152
-25	380-410 / 3 / 50	16	4200	30/76	34/86	60/152
-33	440-480 / 3 / 60	20	5200	30/76	34/86	60/152
-35	380-410 / 3 / 50	20	5200	30/76	34/86	60/152
-43	440-480 / 3 / 60	23	6200	34/86	34/86	60/152
-45	380-410 / 3 / 50	23	6200	34/86	34/86	60/152
-53	440-480 / 3 / 60	26	6800	38/97	34/86	60/152
-55	380-410 / 3 / 50	26	6800	38/97	34/86	60/152

WARNING: This product can expose you to chemicals including Di(2-ethylhexyl) phthalate (DEHP), which is known to the state of California to cause cancer and birth defects or other reproductive harm. For more information go to www.P65Warnings.ca.gov.



www.nauticalsupplies.com.au

Nautical Supplies Darwin:

80 Frances Bay Road, Darwin, NT
PO Box 37671, Winnellie, NT 0821
T: 08 8981 6651 | F: 08 8941 0251
E: Sales@nauticalsupplies.com.au

Nautical Supplies Cairns:

12-16 Liberty Street,
Portsmouth, QLD, 4870
T: 07 4050 0090
E: CairnsSales@nauticalsupplies.com.au

Servicing the Maritime Industry since 1978 | Nautical Supplies are a member of the AMI Group of Companies

Tasman Sea T-3 Watermakers

8,000 - 18,000 GPD
30-68 M³/D



Features & Benefits

- Oil-free pump
- HMI interface
- Aluminum frame
- ANSI flanges
- All controls & instrumentation for safe and reliable operations.
- Compact design
- Automatic control
- Digital control



Specifications

Part Number A600, A601, A611, A612	Voltage	Capacity M ³ /Day	Permeate GPD	Vertical Dimensions (in/cm)		
				Length	Width	Height
-30	440-480 / 60 / 3	30	8000	29/74	77/196	49/124
-31	380-410 / 50 / 3	30	8000	29/74	77/196	49/124
-38	440-480 / 60 / 3	38	10000	29/74	77/196	49/124
-39	380-410 / 50 / 3	38	10000	29/74	77/196	49/124
-44	440-480 / 60 / 3	45	12000	29/74	77/196	49/124
-45	380-410 / 50 / 3	45	12000	29/74	77/196	49/124
-61	440-480 / 60 / 3	61	16000	29/74	77/196	49/124
-62	380-410 / 50 / 3	61	16000	29/74	77/196	49/124
-67	440-480 / 60 / 3	68	18000	29/74	77/196	49/124
-68	380-410 / 50 / 3	68	18000	29/74	77/196	49/124

WARNING: This product can expose you to chemicals including Di(2-ethylhexyl) phthalate (DEHP), which is known to the state of California to cause cancer and birth defects or other reproductive harm. For more information go to www.P65Warnings.ca.gov.

North Sea N-3 Watermakers

19813 GPD – 38305 GPD
75 M³/D – 145 M³/D



Features & Benefits

- Oil-free pump
- HMI interface
- Aluminum frame
- ANSI flanges
- Compact design
- Automatic control
- Digital control
- All controls & instrumentation for safe and reliable operations.



EXCLUSIVE AUSTRALIAN
DISTRIBUTOR
Contact AMI for Supply,
spares and service

Specifications

Part Number A650	Voltage	Capacity M ³ /Day	Permeate GPD	Vertical Dimensions (in/cm)		
				Length	Width	Height
-72	440-480 / 60 / 3	75	19813	100/2540	29/737	65/1651
-73	380-415 / 50 / 3	75	19813	100/2540	29/737	65/1651
-90	440-480 / 60 / 3	95	25096	100/2540	29/737	65/1651
-91	380-415 / 50 / 3	95	25096	100/2540	29/737	65/1651
-98	440-480 / 60 / 3	98	25920	100/2540	29/737	65/1651
-99	380-415 / 50 / 3	98	25920	100/2540	29/737	65/1651
-105	440-480 / 60 / 3	105	27738	100/2540	29/737	65/1651
-106	380-415 / 50 / 3	105	27738	100/2540	29/737	65/1651
-120	440-480 / 60 / 3	120	31701	100/2540	29/737	65/1651
-121	380-415 / 50 / 3	120	31701	100/2540	29/737	65/1651
-145	440-480 / 60 / 3	145	38305	100/2540	29/737	65/1651
-146	380-415 / 50 / 3	145	38305	100/2540	29/737	65/1651

WARNING: This product can expose you to chemicals including Di(2-ethylhexyl) phthalate (DEHP), which is known to the state of California to cause cancer and birth defects or other reproductive harm. For more information go to www.P65Warnings.ca.gov.



www.nauticalsupplies.com.au

Nautical Supplies Darwin:

80 Frances Bay Road, Darwin, NT
PO Box 37671, Winnellie, NT 0821

T: 08 8981 6651 | F: 08 8941 0251

E: Sales@nauticalsupplies.com.au

Nautical Supplies Cairns:

12-16 Liberty Street,
Portsmouth, QLD, 4870

T: 07 4050 0090

E: CairnsSales@nauticalsupplies.com.au

Servicing the Maritime Industry since 1978 | Nautical Supplies are a member of the AMI Group of Companies

Commercial Pure Water Series

PW 3000-18000 GPD
(11-68 m³/day)



- Monel mesh strainer and dual sediment prefilters.
- Maintenance-free air/oil separator allows operation while underway.

Specifications

Model	Part Number	Power Volts/Ph/ Hz/Amps	Capacity GPH / m ³	Dimensions W x D x H inch (cm)	Weight lbs./kg
PW-3000	90-8654	220/1/60/53	125 / 11	84/213x34/86x35/89	800/364
	90-8206	380/3/50/17			
	90-8236	440/3/60/17			
PWM-3000	90-8653	440/3/60/17		MODULAR	
PW-4000	90-8262	220/1/60/53	167 / 15	84/213x34/86x35/89	900/409
	90-8243	380/3/50/17			
	90-8240	440/3/60/17			
PWM-4000	90-8655	440/3/60/17		MODULAR	
PW-5000	90-8656	380/3/50/24	208/20	84/213x34/86x35/89	1000/455
	90-8599	440/3/60/22			
PWM-5000	90-8257	440/3/60/22		MODULAR	
PW-6000	90-8070	380/3/50/24	250 / 25	84/213x44/111x35/89	1050/477
	90-8657	440/3/60/22			
PWM-6000	90-8261	440/3/60/22		MODULAR	
PW-7000	90-8659	380/3/50/24	292/27	84/213x48/121x35/89	1500/682
	90-8245	440/3/60/22			
PWM-7000	90-8658	440/3/60/22		MODULAR	
PW-8000	90-8214	380/3/50/28	333/30	84/213x48/121x35/89	1600/727
	90-8203	440/3/60/27			
PWM-8000	90-8660	440/3/60/27		MODULAR	
PW-10000	90-8051	380/3/50/28	417 / 40	84/213x48/121x35/89	1800/818
	90-8073	440/3/60/27			
PWM-10000	90-8661	440/3/60/27		MODULAR	
PW-12000	90-8258	380/3/50/37	500 / 45	88/223x52/132x35/89	1900/864
	90-8284	440/3/60/33			
PWM-12000	90-8662	440/3/60/33		MODULAR	
PW-16000	90-8075	380/3/50/37	667 / 61	88/223x52/132x43/109	2200/1000
	90-8193	440/3/60/33			
PWM-16000	90-8126	440/3/60/33		MODULAR	
PW-18000	90-8232	380/3/50/43	833 / 75	88/223x52/132x43/109	2250/1022
	90-8542	440/3/60/39			
PWM-18000	90-8663	440/3/60/39		MODULAR	

⚠ WARNING: This product can expose you to chemicals including Di(2-ethylhexyl) phthalate (DEHP), which is known to the state of California to cause cancer and birth defects or other reproductive harm. For more information go to www.P65Warnings.ca.gov.

LT Watermakers

3000 to 7000 GPD

(11 to 27 m³/day)

Features & Benefits

- Stainless steel high pressure pump is resistant to the corrosive seawater environment.
- Fiberglass cartridge filter housing holds 100 square foot 5 micron element.
- Marine bronze low pressure pump provides up to 50 psi of boost pressure to the filtration system.
- Glycerine filled pressure gauges.
- Flowmeters to monitor freshwater and reject rates.
- Freshwater flush system included standard.
- 316 stainless steel pressure regulator is adjustable to allow operation in brackish or fresh water.
- Electrical control panel Nema 4X with motor starter and pump controls.



Specifications

Model #	Part Number	Power Volts/ phase/Hz/Amps	Dimensions** inch/cm	Capacity GPM-m ³ /Day	Weight lbs/kg
LT-3000	90-6057	220/1/60/53	width 40/102	125/11	1060/480
	90-6059	440/3/60/17	depth 39/99		
	90-6058	380/3/50/17	height 62/157		
LT-4000	90-6060	220/1/60/53	width 40/102	167/15	1080/490
	90-6062	440/3/60/17	depth 39/99		
	90-6061	380/3/50/17	height 62/157		
LT-5000	90-6063	440/3/60/22	width 40/102	208/20	1140/520
	90-6031	380/3/50/24	depth 39/99		
LT-7000	90-6065	440/3/60/22	width 40/102	292/27	1290/585
	90-6064	380/3/50/24	depth 43/109		
			height 62/157		

*Add part number 90-0264 to include optional media filter.

**Includes membrane rack mounted vertically. Does not include boost pump or optional media filter that increase width to 56/142.

WARNING: This product can expose you to chemicals including Di(2-ethylhexyl) phthalate (DEHP), which is known to the state of California to cause cancer and birth defects or other reproductive harm. For more information go to www.P65Warnings.ca.gov.



www.nauticalsupplies.com.au

Nautical Supplies Darwin:

80 Frances Bay Road, Darwin, NT
PO Box 37671, Winnellie, NT 0821

T: 08 8981 6651 | F: 08 8941 0251

E: Sales@nauticalsupplies.com.au

Nautical Supplies Cairns:

12-16 Liberty Street,
Portsmouth, QLD, 4870

T: 07 4050 0090

E: CairnsSales@nauticalsupplies.com.au

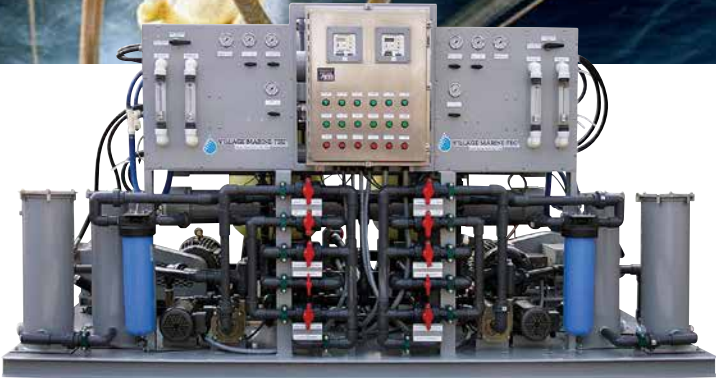
Servicing the Maritime Industry since 1978 | Nautical Supplies are a member of the AMI Group of Companies

Offshore Desalinators SW Series

SW-24, SW-32, SW-40
(91, 120, 151 m³/day)

Features & Benefits

- Titanium head for maximum corrosion resistance.
- Five plunger design allows lower rpm, lower noise and less vibration.
- Ceramic plungers and nylon valves will not corrode.



Specifications

Model	Part #	Product Flow* GPD	m³/day	Power at 440/3/60	Skid Size	Operating Weight
SW 24	90-8558	24000	91	60 Amps	142" long	6950 lbs
SW 32	90-8556	32000	120	60 Amps	72" deep	7300 lbs
SW 40	90-8608	40000	150	170 Amps	78" high	7500 lbs

*Product flow based on median seawater conditions, both trains running.

⚠ WARNING: This product can expose you to chemicals including Di(2-ethylhexyl) phthalate (DEHP), which is known to the state of California to cause cancer and birth defects or other reproductive harm. For more information go to www.P65Warnings.ca.gov.

Bilgewater Adsorbent Separator

BAS-500, BAS-1000,
BAS-2000, and BAS-2500

Features & Benefits

- USCG Certified to meet IMO MEPC 107(49) regulations.
- MEPC 107(49) certified oil content monitor included.
- Advanced three-stage design for maximum oil separation.
- Automated oil flush system.
- Compact design minimizes installation requirements.

Specifications

Model #	Part Number	Power Volts/ phase/Hz	Dimensions inch/mm	Capacity GPM/m ³ /hr	Dry Weight lbs/kg	Operating Weight lbs/kg	Power (Amps)
BAS-500	90-5086	110/1/60	width: 34.5/877 depth: 28.33/119 height: 50.9/1293	2.2 / .5	525/238	700/282	7.9
	90-5087	220/1/60					3.9
	90-5088	220/3/60					2.4
	90-5089	440/3/60					1.2
	90-5090	230/1/50					4.5
	90-5091	380/3/50					1.5
BAS-1000	90-5092	110/1/60	width: 33/838 depth: 46/1168 height: 67/1701	4.4 / 1	630/286	880/399	7.4
	90-5093	220/1/60					3.7
	90-5094	220/3/60					2
	90-5095	440/3/60					1
	90-5096	230/1/50					3.6
	90-5097	380/3/50					1
BAS-2000	90-5098	110/1/60	width 44/1118 depth 66/1676 height 62/1575	8.8 / 2	1200/544	2090/948	7.9
	90-5099	220/1/60					3.9
	90-5100	220/3/60					2.4
	90-5101	440/3/60					1.2
	90-5102	230/1/50					3.6
	90-5103	380/3/50					1
BAS-2500	90-5104	110/1/60	width 44/1118 depth 66/1676 height 62/1575	11 / 2.5	1260/572	2150/975	7.4
	90-5105	220/1/60					3.7
	90-5106	220/3/60					2
	90-5107	440/3/60					1
	90-5108	230/1/50					3.6

*Water production capacity may be slightly less than rated for all 50 Hz units.

WARNING: This product can expose you to chemicals including Di(2-ethylhexyl) phthalate (DEHP), which is known to the state of California to cause cancer and birth defects or other reproductive harm. For more information go to www.P65Warnings.ca.gov.



www.nauticalsupplies.com.au

Nautical Supplies Darwin:

80 Frances Bay Road, Darwin, NT
PO Box 37671, Winnellie, NT 0821

T: 08 8981 6651 | F: 08 8941 0251

E: Sales@nauticalsupplies.com.au

Nautical Supplies Cairns:

12-16 Liberty Street,
Portsmouth, QLD, 4870

T: 07 4050 0090

E: CairnsSales@nauticalsupplies.com.au

Servicing the Maritime Industry since 1978 | Nautical Supplies are a member of the AMI Group of Companies

Sea Recovery Maintenance Kits

PRO MINI - MAINTENANCE KIT			
B675220002 Includes	Qty	Part Number	Description
	6	33-0117	ELEMENT PREFILTER 10/05
	1	0804743278	SCREEN MESH 3/8 SEA STRAI
	2	2614010473	ORING BLUE HSG 237
	2	2614100278	ORING SEA STRAINER 3/8 SQ
	3	0803004773	ELEMENT CHARCOAL 10"L NON
	1	B645800001	MCC-1 ALKALINE CLEANER
	1	B645800002	MCC-2 ACID CLEANER
	1	B645800003	CLEANING STORAGE BOTTLE
	1	85-0050	OIL PMP 16OZ

AQUA MATIC - MAINTENANCE KIT W/DUAL PRE-FILTER ASSY			
B675120001 Includes	Qty	Part Number	Description
	6	0801130257	ELEMENT PREFILTER 10/25
	6	33-0117	ELEMENT PREFILTER 10/05
	3	0803004773	ELEMENT CHARCOAL 10"L NON
	2	B646800001	MCC - CLEANING KIT MCC 1 & 2
	2	B645800002	MCC-2 ACID CLEANER
	1	B645800003	CLEANING STORAGE BOTTLE
	1	08251950AS	ELEMENT PH 9-3/4L
	1	85-0050	OIL PMP 16OZ
	3	2614015800	ORING GAUGE/PRES SWITCH 0

AQUA PRO - MAINTENANCE KIT AW CPFE/OWS 32.5			
B675600003 Includes	Qty	Part Number	Description
	2	0801063357	ELEMENT CPFE 5MIC 32.5 SQ
	1	08020723KD	ELEMENT OWSE 32.5SQFT
	3	0803004773	ELEMENT CHARCOAL 10"L NON
	2	B646800001	MCC - CLEANING KIT MCC 1 & 2
	2	B645800002	MCC-2 ACID CLEANER
	1	85-0050	OIL PMP 16OZ
	1	B645800003	CLEANING STORAGE BOTTLE

AQUA MATIC XL Kit			
61012013 Includes	Qty	Part Number	Description
	6	0801063357	ELEMENT CPFE 5MIC
	3	08020723KD	Oil Water Separator
	6	0801133257	ELEMENT CPFE 20MIC
	4	07620310WA-06	O-Ring CPF/OWS 32.5 Sq. Ft
	1	2625130172	SEAL/SEAT BOOSTER PMP HP75
	3	85-0050	Pump Oil
	6	B646800001	MCC 1 & 2 Cleaning Kit
	3	B645800003	Storage Chemical
	3	0803004773	Charcoal Filter
	1	08251950AS	Ph Neutralizer Element
	1	0805823578	Plankton Filter

AQUA PRO - MAINTENANCE KIT AW DUAL PREFILTER			
B675800002 Includes	Qty	Part Number	Description
	6	33-0117	ELEMENT PREFILTER 10/05
	6	0801130257	ELEMENT PREFILTER 10/25
	3	0803004773	ELEMENT CHARCOAL 10"L NON
	3	2614010473	ORING BLUE HSG 237
	2	B646800001	MCC - CLEANING KIT MCC 1 & 2
	2	B645800002	MCC-2 ACID CLEANER
	1	B645800003	CLEANING STORAGE BOTTLE
	1	85-0050	OIL PMP 16OZ

SRC MEMBRANES	
Production/ Day	Membrane Required:
450-1	2724011233 x1
700-1	2724011333 x1
900-1	2724011433 x1
900-2	2724011233 x2
1400-2	2724011333 x2
1800-2	2724011433 x2

AQUA MATIC - MAINTENANCE KIT AQM WITH CPFE/OWS 32.5			
B675120002 Includes	Qty	Part Number	Description
	2	0801063357	ELEMENT CPFE 5MIC 32.5 SQ
	1	08020723KD	ELEMENT OWSE 32.5SQFT
	3	0803004773	ELEMENT CHARCOAL 10"L NON
	1	08251950AS	ELEMENT PH 9-3/4L
	2	B646800001	MCC - CLEANING KIT MCC 1 & 2
	1	B645800003	CLEANING STORAGE BOTTLE
	1	85-0050	OIL PMP 16OZ
	3	2614015800	ORING GAUGE/PRES SWITCH 0

⚠ WARNING: This product can expose you to chemicals including Di(2-ethylhexyl) phthalate (DEHP), which is known to the state of California to cause cancer and birth defects or other reproductive harm. For more information go to www.P65Warnings.ca.gov.

VMT Maintenance Kits

KIT,CRUISE,LWM 145/200 GP			
	Qty	Part Number	Description
99-0151	1	85-0050	OIL, PLUNGER PUMP, PER 1 QUART
	6	33-0117	FILTER,PLT,5 MIC,10.0" LG
	1	33-0311	FILTER,CARBON,5 MIC,2.5" X10"
	1	90-0005	O-RING, FILTER HOUSING, 10 SQF
	1	99-6880	WRENCH,FILTER,10 SQFT HOUSING,
	2	90-2512	KIT, O-RING, 2.5" PRESSURE VES
	2	85-0102	KIT, CLEANING, FILTER CARTRIDG
	1	85-0103	KIT,PRESERVATIVE,FILTER CARTRI
	4	32-2116	O-RING,END PLUG PRODUCT TUBE,
	1	90-0005	O-RING, FILTER HOUSING, 10 SQF

MAINTENANCE KIT SF> VOYAGER			
	Qty	Part Number	Description
B675210024	2	0801063357	FILTER,PLT,5 MIC,13.0" LG
	2	08020723KD	ELEMENT OWSE 32.5SQFT
	3	0803004773	ELEMENT CHARCOAL 10"L NON-LBL
	2	H41949001A	MEMBRANE CLEANING CC1 AKALINE
	2	H41949002A	MEMBRANE CLEANING CC2 ACID ASS
	1	H41949005A	MEMBRANE STORAGE CHEM ASSY
	1	0421051239-2	ORING SEA STRAINER 3/4 RUBBER
	1	0421051239-6	SCREEN MESH 3/4 MONEL BRONZE
	1	85-0050	OIL, PLUNGER PUMP, PER 1 QUART
	2	07620310WA-06	ORING LID 32.5SQFT CPF/OWS

KIT,CRUISE,LTM 500-800 GP			
	Qty	Part Number	Description
99-0199	1	85-0050	OIL, PLUNGER PUMP, PER 1 QUART
	6	33-0117	FILTER,PLT,5 MIC,10.0" LG
	1	33-0311	FILTER,CARBON,5 MIC,2.5" X10"
	1	90-0005	O-RING, FILTER HOUSING, 10 SQF
	1	99-6880	WRENCH,FILTER,10 SQFT HOUSING,
	2	90-2512	KIT, O-RING, 2.5" PRESSURE VES
	2	85-0102	KIT, CLEANING, FILTER CARTRIDG
	1	85-0103	KIT,PRESERVATIVE,FILTER CARTRI

KIT SF CRUISER UPGRADE			
	Qty	Part Number	Description
B675210023	2	0801063357	FILTER,PLT,5 MIC,13.0" LG
	1	08020723KD	ELEMENT OWSE 32.5SQFT
	3	0803004773	ELEMENT CHARCOAL 10"L NON-LBL
	2	B645800001	MCC-1 ALKALINE CLEANER
	2	B645800002	MCC-2 ACID CLEANER
	1	B645800003	CLEANING STORAGE BOTTLE
	2	85-0050	OIL, PLUNGER PUMP, PER 1 QUART
	2	07620310WA-06	ORING LID 32.5SQFT CPF/OWS

KIT,CRUISE,LTM 1000-1800			
	Qty	Part Number	Description
99-0197	1	85-0050	OIL, PLUNGER PUMP, PER 1 QUART
	1	33-0311	FILTER,CARBON,5 MIC,2.5" X10"
	1	90-0005	O-RING, FILTER HOUSING, 10 SQF
	2	90-2512	KIT, O-RING, 2.5" PRESSURE VES
	6	33-0052	FILTER,PLT,5 MIC,10.0" LG
	1	99-0265	WRENCH, FILTER, BIG WHITE HOUS
	1	33-0271	O-RING, FILTER HOUSING, BIG WH
	1	90-0562	KIT,CLEAN & PRESERVE,PW UNITS

WARNING: This product can expose you to chemicals including Di(2-ethylhexyl) phthalate (DEHP), which is known to the state of California to cause cancer and birth defects or other reproductive harm. For more information go to www.P65Warnings.ca.gov.



www.nauticalsupplies.com.au

Nautical Supplies Darwin:

80 Frances Bay Road, Darwin, NT
PO Box 37671, Winnellie, NT 0821

T: 08 8981 6651 | **F:** 08 8941 0251

E: Sales@nauticalsupplies.com.au

Nautical Supplies Cairns:

12-16 Liberty Street,
Portsmouth, QLD, 4870

T: 07 4050 0090

E: CairnsSales@nauticalsupplies.com.au

Servicing the Maritime Industry since 1978 | Nautical Supplies are a member of the AMI Group of Companies

VMT Maintenance Kits (continued)

MAINTENANCE KIT SF CRUISER With STD 10" PF			
B675210022	Qty	Part Number	Description
	2	H41949001A	MEMBRANE CLEANING CC1 AKALINE
	2	H41949002A	MEMBRANE CLEANING CC2 ACID ASS
	1	H41949005A	MEMBRANE STORAGE CHEM ASSY
	2	2614010473	ORING BLUE HSG 237
	6	0801130257	FILTER,PLT,25 MIC,10.0" LG
	6	33-0117	FILTER,PLT,5 MIC,10.0" LG
	1	85-0050	OIL, PLUNGER PUMP, PER 1 QUART
	2	0803004773	ELEMENT CHARCOAL 10"L NON-LBL

MAINTENANCE KIT SF BASIC (For SEAFARI BASIC)			
B675210021	Qty	Part Number	Description
	6	33-0117	FILTER,PLT,5 MIC,10.0" LG
	6	0801130257	FILTER,PLT,25 MIC,10.0" LG
	2	2614010473	ORING BLUE HSG 237
	2	B645800001	MCC-1 ALKALINE CLEANER
	2	B645800002	MCC-2 ACID CLEANER
	1	B645800003	CLEANING STORAGE BOTTLE
	1	85-0050	OIL, PLUNGER PUMP, PER 1 QUART

KIT,CRUISE,PW400 GPD			
99-0140	Qty	Part Number	Description
	2	33-0005	FILTER,PLT,5 MIC,8.0" LG
	1	33-0311	FILTER,CARBON,5 MIC,2.5" X10"
	2	32-2228	O-RING,END PLUG,2.5" PV
	4	32-2116	O-RING,END PLUG PRODUCT TUBE,
	1	30-0405	O-RING,FILTER HOUSING,30SQFT
	1	85-0036	CLEANER, #1, DETERGENT, 1 LB,
	1	85-0037	CLEANER, #2, SCALE REMOVER, 1
	1	85-0038	PRESERVATIVE,#3,600G,1 LB JAR
	1	70-6174	#N/A
	1	90-0005	O-RING, FILTER HOUSING, 10 SQF
	2	85-0050	OIL, PLUNGER PUMP, PER 1 QUART

KIT,CRUISE,PW800-2000 GPD			
99-0257	Qty	Part Number	Description
	2	33-0005	FILTER,PLT,5 MIC,8.0" LG
	2	33-0020	FILTER,PLT,20 MIC,8.0" LG
	1	33-0315	ELEMENT,CARBON FILTER,5X10,BIG
	4	32-2228	O-RING,END PLUG,2.5" PV
	8	32-2116	O-RING,END PLUG PRODUCT TUBE,
	1	30-0405	O-RING,FILTER HOUSING,30SQFT
	1	20-4096	PROBE,CONDUCTIVITY,5-WIRE,5'
	1	70-6184	KIT,PUMP,MANIFOLD,708-5
	1	33-0271	O-RING, FILTER HOUSING, BIG WH
	2	85-0050	OIL, PLUNGER PUMP, PER 1 QUART
	1	85-0036	CLEANER, #1, DETERGENT, 1 LB,
	1	85-0037	CLEANER, #2, SCALE REMOVER, 1
	1	85-0038	PRESERVATIVE,#3,600G,1 LB JAR

⚠ WARNING: This product can expose you to chemicals including Di(2-ethylhexyl) phthalate (DEHP), which is known to the state of California to cause cancer and birth defects or other reproductive harm. For more information go to www.P65Warnings.ca.gov.